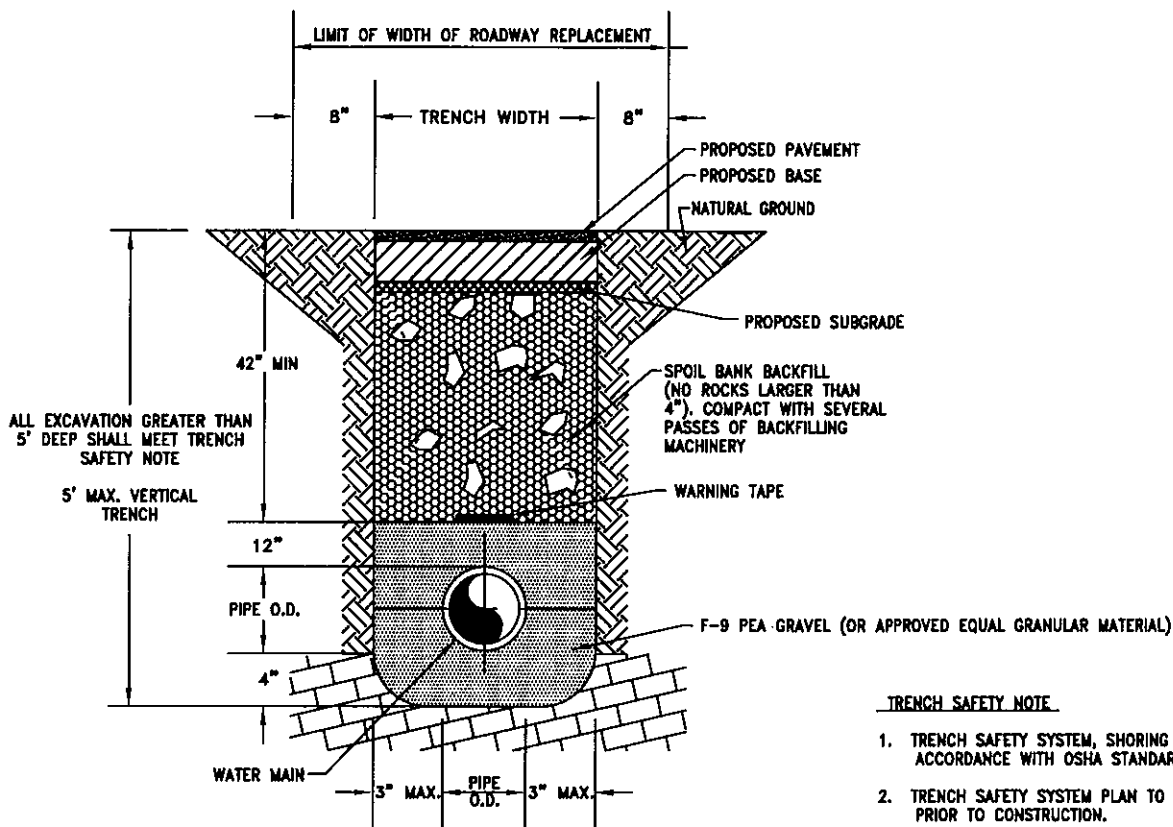


1. All fittings 4" and larger must be installed with Mega-Lug.
2. The valve on a hot tap must be anchored to the hot tap saddle.
3. All ductile iron fittings, valves, etc. must have a stable foundation of concrete blocking.
4. The Construction Inspector is to inspect all construction material prior to installation. The Contractor should coordinate with Inspector on construction material shipments.
5. Typically, no valves may be installed under driveways.
6. Prior to construction the Contractor shall coordinate a Pre-Construction Conference with the Construction Inspector.
7. The Construction Inspector must be present prior to and during disinfection and pressure testing.
8. Goforth will provide water for pressure testing and disinfection testing at currently established rates. Water for other construction purposes may or may not be available. The Contractor shall coordinate with the Construction Inspector to make all arrangements for water.
9. Valve housings and meter boxes installed within public right-of-way must be 3"-5" above finished grade for approval. Any valve housings or meter boxes installed within public right-of-way at or below grade will not be accepted. Any valve housings installed within private easement can be installed at finished grade.
10. All water distribution and transmission main fittings must be ductile iron.
11. All bolts on Mechanical Joint fittings and/or Mega-Lugs must be wrapped in plastic prior to concrete being poured.
12. Adequate chlorine residuals must be recorded 24 hours before bacteriological samples may be taken.
13. Any contractor taking Goforth water for construction purposes prior to the water mains being disinfected must have an air gap at the entry point on the truck or backflow preventor at the bottom of tanker.
14. All required water samples must be taken by the Construction Inspector.
15. After final acceptance, by Goforth, of the water system improvements, Goforth will be provided a one-year warranty by the Contractor.
16. Upon final acceptance, by Goforth, of the water system improvements, the improvements will become sole property of Goforth.
17. Water and Wastewater services must maintain a minimum of 12" vertical separation, preferably 24".
18. All valves larger than 12" nominal size shall be butterfly valves rather than gate valves.
19. All road bores must have spacers on pipe in the casing on water lines 6" and above.
20. Goforth S.U.D. Construction Inspector has full responsibility of reviewing contractor's work, materials, etc. Failure to comply with GSUD specifications will result in rejection of the work & delay of service until compliance is met.

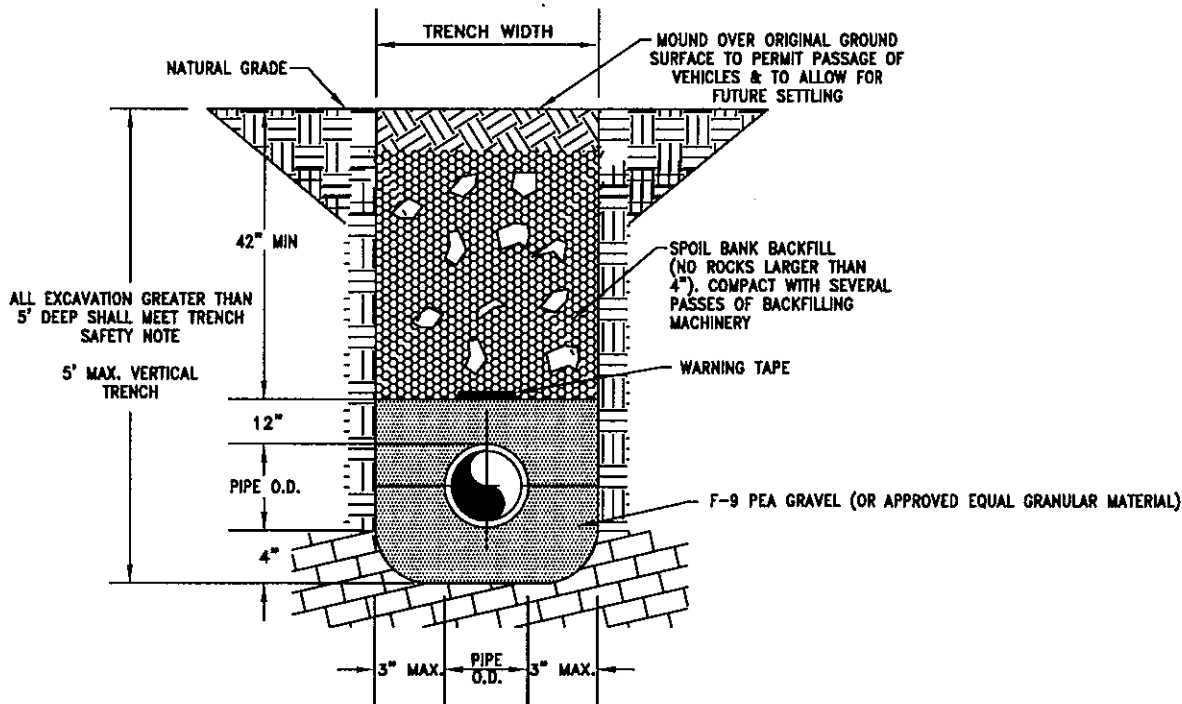
GENERAL CONSTRUCTION NOTES	
SCALE : NONE	REV. DATE : 3/07
DWG. W-1	
GOFORTH S.U.D. HAYS, CALDWELL & TRAVIS COUNTIES, TEXAS	
S:\Projects_1\0092-Goforth WSC\DETAILS\DETAILS-0507.dwg	



TYPICAL ROAD BACKFILL

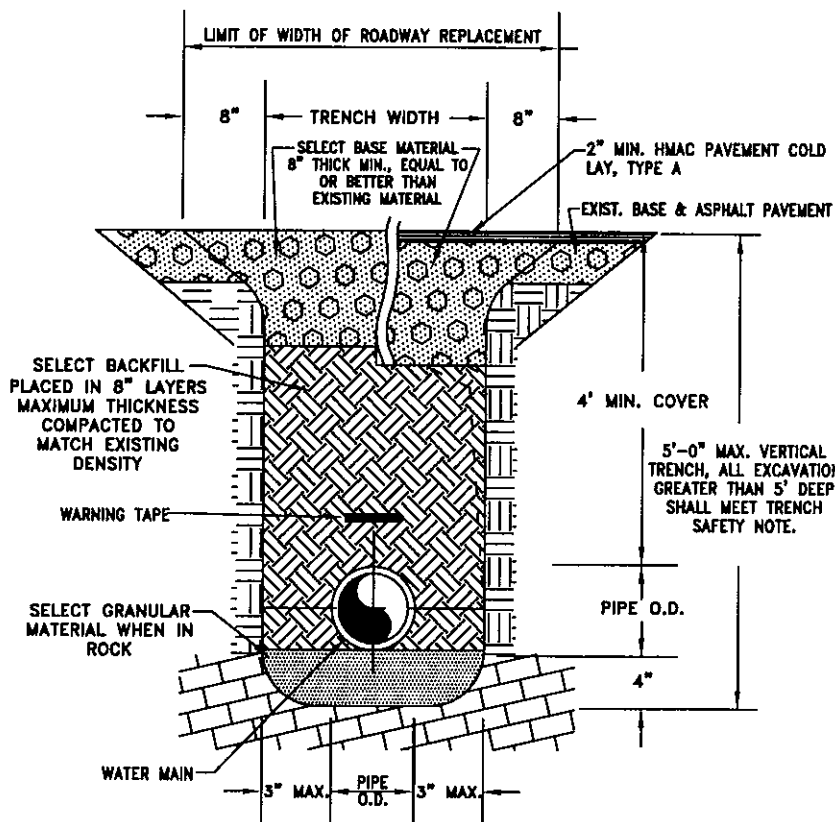
TRENCH SAFETY NOTE

1. TRENCH SAFETY SYSTEM, SHORING OR SIDE SLOPE TO BE IN ACCORDANCE WITH OSHA STANDARDS.
2. TRENCH SAFETY SYSTEM PLAN TO BE PROVIDED BY CONTRACTOR PRIOR TO CONSTRUCTION.



TYPICAL TRENCH BACKFILL

TRENCH DETAILS WITHIN BUDA, KYLE & HAYS COUNTY ROW	
SCALE : NONE	REV. DATE : 3/07
DWG. W-2	
GOFORTH S.U.D. HAYS, CALDWELL & TRAVIS COUNTIES, TEXAS	
S:\Projects_1\0092-Goforth WSC\DETAILS\DETAILS-0507.dwg	



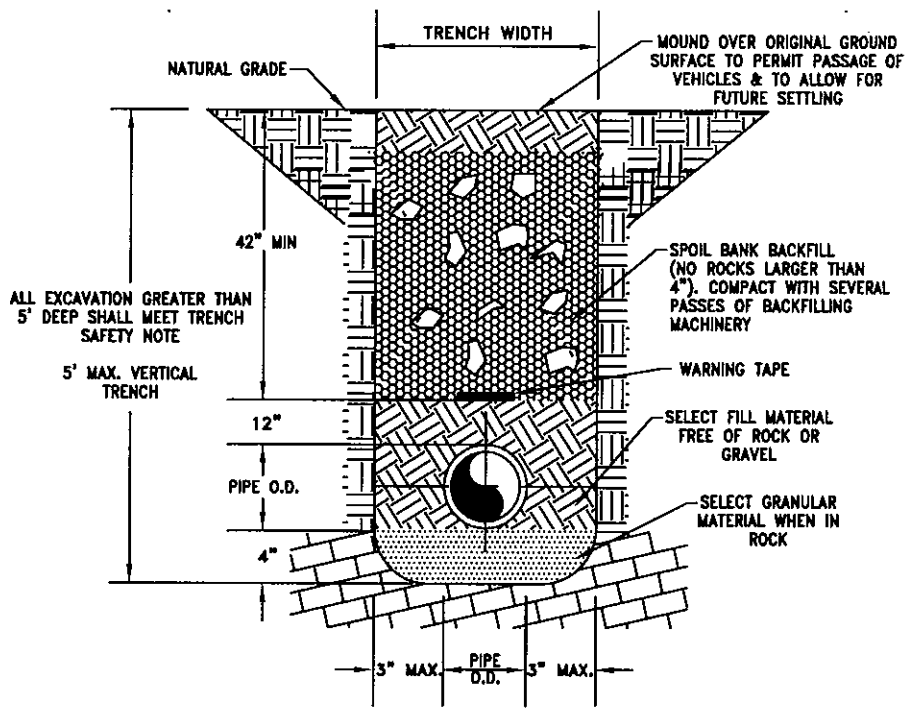
TYPICAL DRIVEWAY BACKFILL

TRENCHING NOTES

1. ADEQUATE BARRICADES & WARNING SIGNS SHALL BE ERECTED BEFORE ANY WORK IS STARTED IN PUBLIC RIGHT-OF-WAY.
2. THE ROADWAY SHALL BE CUT ONLY WHERE REQUIRED BY THE ENGINEER.
3. NO MORE THAN HALF OF THE WIDTH OF THE ROAD SHALL BE CUT & OPENED AT ONE TIME.
4. REFER TO SPECIFICATIONS FOR ANY SPECIAL REQUIREMENTS OR CONDITIONS.
5. BACKFILL SHALL BE COMPLETED IMMEDIATELY AFTER PIPELINE LAYING WITHIN PUBLIC RIGHT-OF-WAYS OR CROSSING PUBLIC RIGHT-OF-WAYS & PRIVATE DRIVEWAYS.

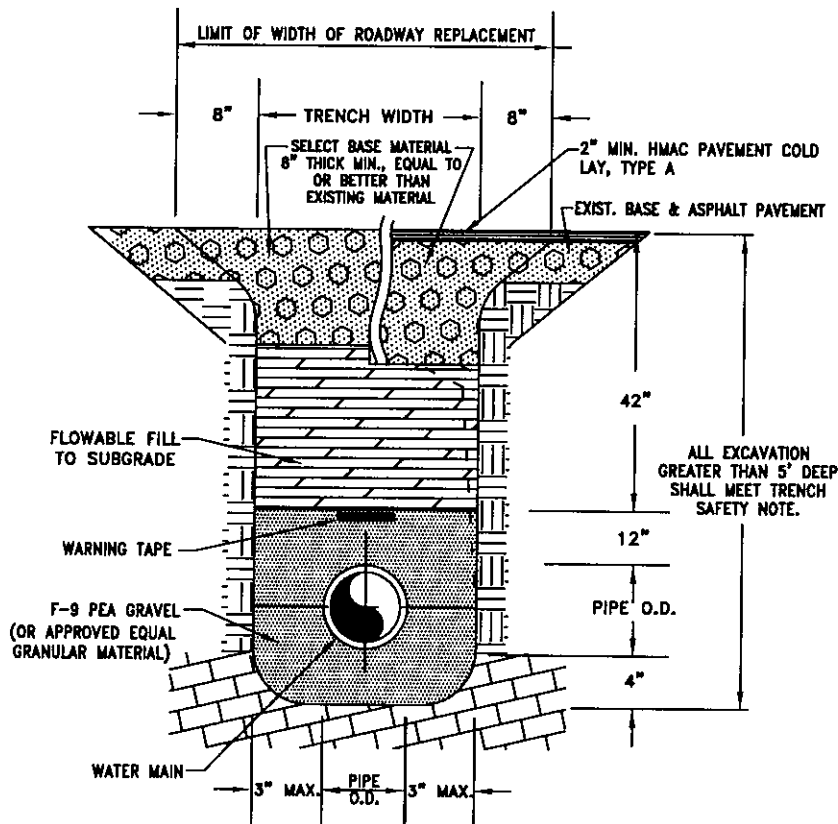
TRENCH SAFETY NOTE

1. TRENCH SAFETY SYSTEM, SHORING OR SIDE SLOPE TO BE IN ACCORDANCE WITH OSHA STANDARDS.
2. TRENCH SAFETY SYSTEM PLAN TO BE PROVIDED BY CONTRACTOR PRIOR TO CONSTRUCTION.



TYPICAL TRENCH BACKFILL

TRENCH DETAILS WITHIN COUNTY ON PRIVATE EASEMENT	
SCALE : NONE	REV. DATE : 3/05
DWG. W-3	
GOFORTH S.U.D. HAYS, CALDWELL & TRAVIS COUNTIES, TEXAS	
S:\Projects_1\0092-Goforth WSC\DETAILS\DETAILS-0507.dwg	



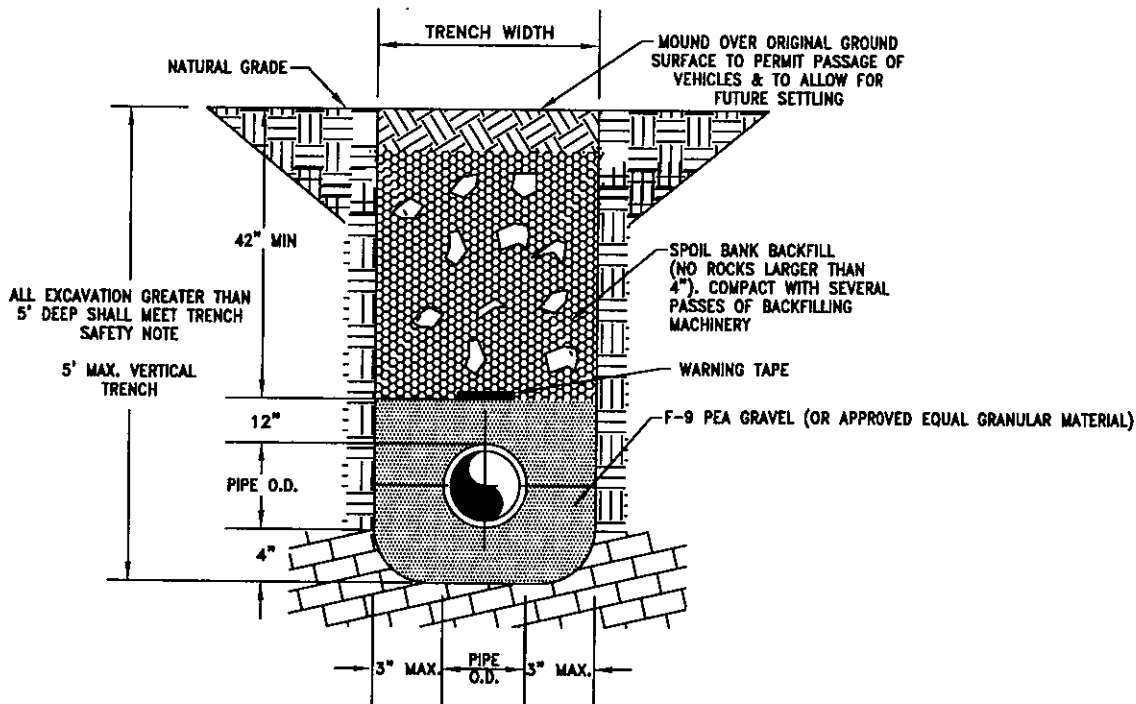
TYPICAL ROAD & DRIVEWAY REPAIR BACKFILL

TRENCHING NOTES

1. ADEQUATE BARRICADES & WARNING SIGNS SHALL BE ERECTED BEFORE ANY WORK IS STARTED IN PUBLIC RIGHT-OF-WAY.
2. THE ROADWAY SHALL BE CUT ONLY WHERE REQUIRED BY THE ENGINEER.
3. NO MORE THAN HALF OF THE WIDTH OF THE ROAD SHALL BE CUT & OPENED AT ONE TIME.
4. REFER TO SPECIFICATIONS FOR ANY SPECIAL REQUIREMENTS OR CONDITIONS.
5. BACKFILL SHALL BE COMPLETED IMMEDIATELY AFTER PIPELINE LAYING WITHIN PUBLIC RIGHT-OF-WAYS OR CROSSING PUBLIC RIGHT-OF-WAYS & PRIVATE DRIVEWAYS.

TRENCH SAFETY NOTE

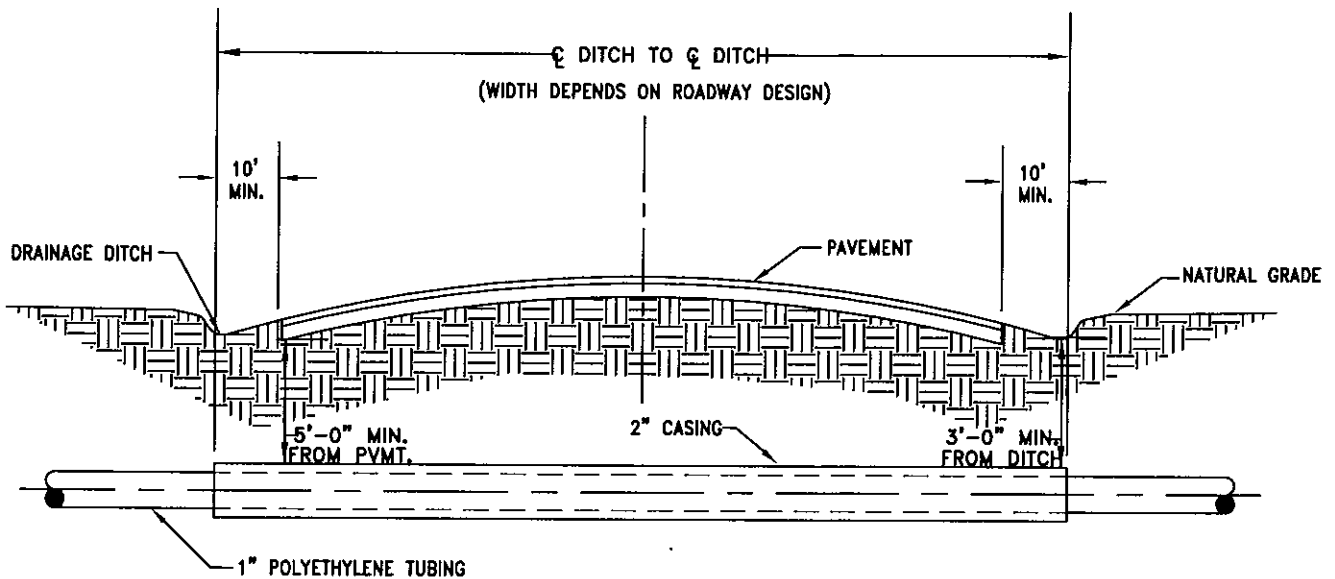
1. TRENCH SAFETY SYSTEM, SHORING OR SIDE SLOPE TO BE IN ACCORDANCE WITH OSHA STANDARDS.
2. TRENCH SAFETY SYSTEM PLAN TO BE PROVIDED BY CONTRACTOR PRIOR TO CONSTRUCTION.



TYPICAL TRENCH BACKFILL

TRENCH DETAILS WITHIN STATE ROW	
SCALE : NONE	REV. DATE : 3/07
DWG. W-4	
GOFORTH S.U.D. HAYS, CALDWELL & TRAVIS COUNTIES, TEXAS	
S:\Projects_1\0092-Goforth WSC\DETAILS\DETAILS-0507.dwg	

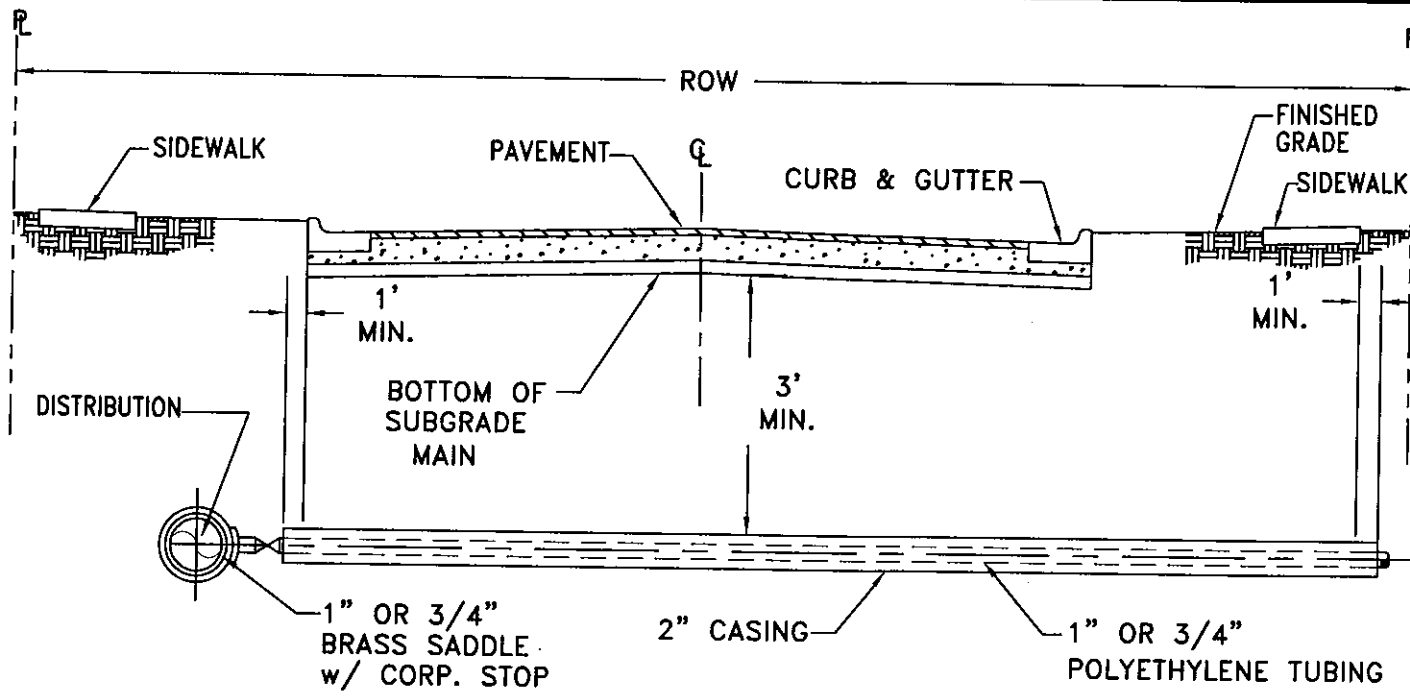
NOTE:
 UNLESS OTHERWISE REQUIRED BY THE
 ROADWAY AUTHORITY, CASING PIPE
 SHALL BE ASTM D 2241, SDR21, OR
 ASTM D 1785, SCH. 40



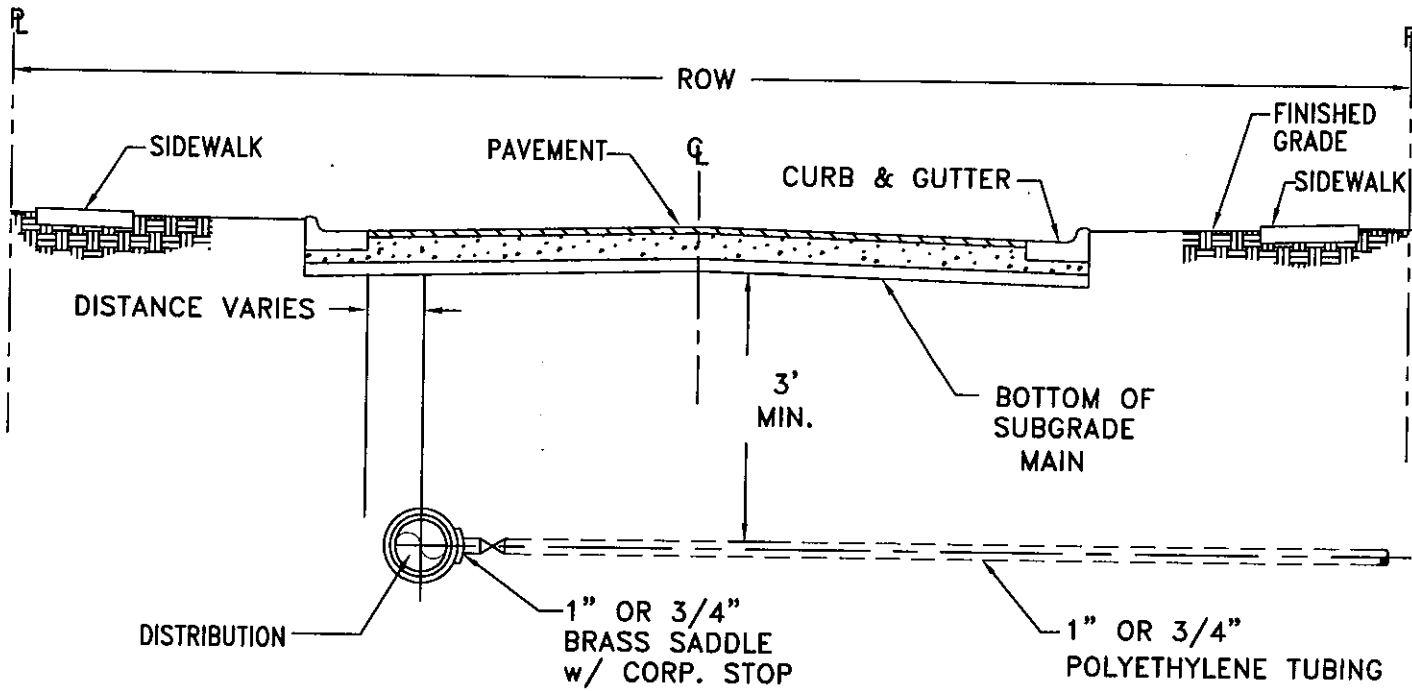
NOTE: CASING SPACERS ARE REQUIRED FOR ALL LINES 6" AND LARGER

SERVICE LINE BORING & ENCASEMENT DETAILS—RURAL

METER SERVICE DETAIL	
SCALE : NONE	REV. DATE : 3/07
DWG. W-5	
GOFORTH S.U.D. HAYS, CALDWELL & TRAVIS COUNTIES, TEXAS	
S:\Projects_1\0092-Goforth WSC\DETAILS\DETAILS-0507.dwg	



(OUTSIDE OF PAVEMENT)



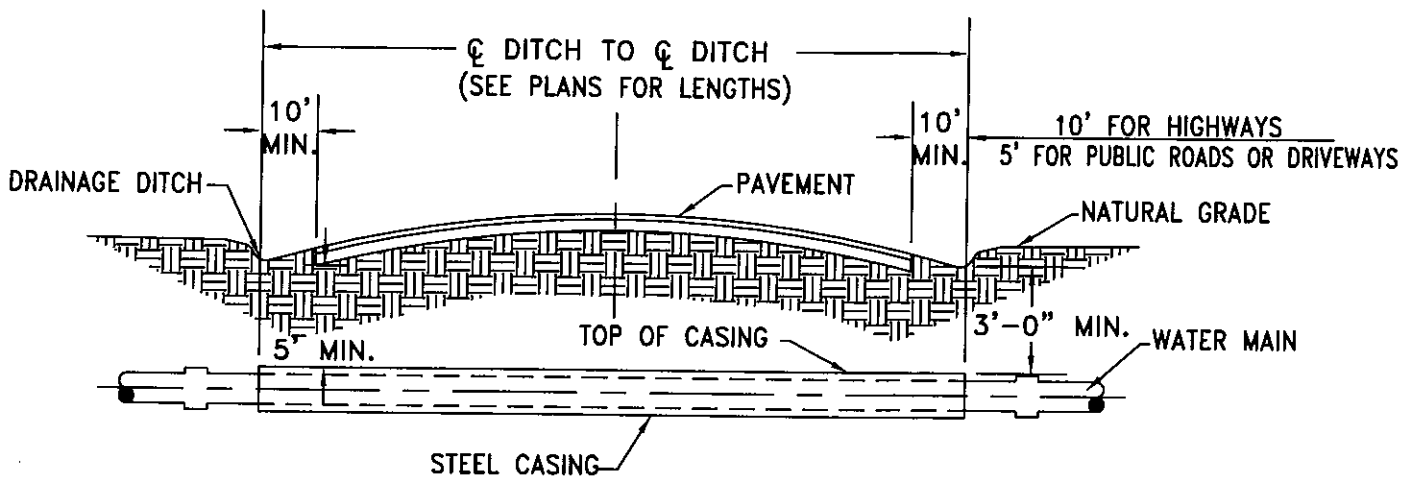
(UNDER PAVEMENT)

SERVICE LINE

BORING & ENCASEMENT DETAILS-URBAN

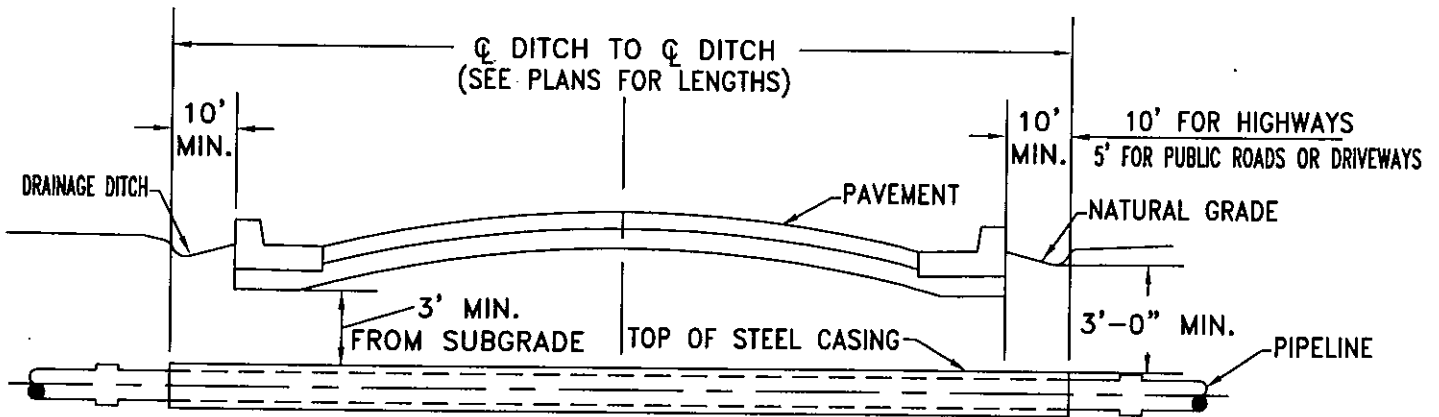
NOTE:
 UNLESS OTHERWISE REQUIRED BY
 THE ROADWAY AUTHORITY, CASING
 PIPE SHALL BE ASTM D 2241,
 SDR21, OR ASTM D 1785, SCH. 40

METER SERVICE DETAIL	
SCALE : NONE	REV. DATE : 3/07
DWG. W-6	
GOFORTH S.U.D. HAYS, CALDWELL & TRAVIS COUNTIES, TEXAS	
S:\Projects_1\0092-Goforth WSC\DETAILS\DETAILS-0507.dwg	



NOTE: CASING SPACERS ARE REQUIRED FOR ALL LINES 6" AND LARGER

ROAD (W/O CURB & GUTTER) CROSSING



NOTE: CASING SPACERS ARE REQUIRED FOR ALL LINES 6" AND LARGER

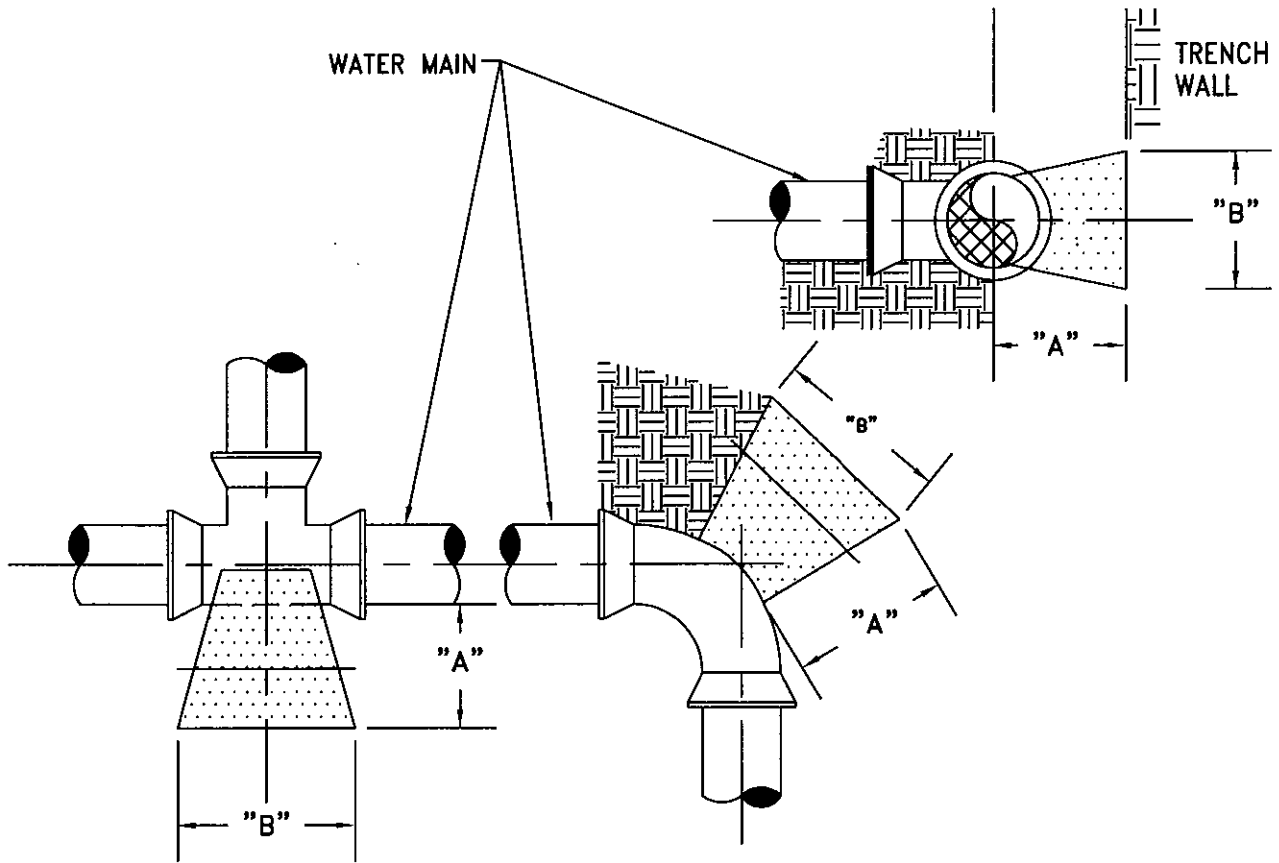
ROAD (W/CURB & GUTTER) CROSSING

STEEL CASING SHALL BE STANDARD WEIGHT OR HEAVIER PIPE CONFORMING TO ASTM A 53 OR OTHER ACCEPTABLE STANDARD SPECIFICATION. STEEL CASING SHALL BE NEW OR USED IN GOOD CONDITION ACCEPTABLE TO GOFORTH AND TO THE ROADWAY AUTHORITY.

BORING & ENCASEMENT DETAILS	
SCALE : NONE	REV. DATE : 3/07
DWG. W-7	
GOFORTH S.U.D. HAYS, CALDWELL & TRAVIS COUNTIES, TEXAS	
S:\Projects_1\0092-Goforth WSC\DETAILS\DETAILS-0507.dwg	

PIPE SIZE	DIMENSION "B" (SQUARE)				
	PLUGS & TEES	90° BENDS	45° BENDS	22 1/2° BENDS	VALVES
4" & 6"	1'-3"	1'-6"	1'-0"	9"	1'-3"
8"	1'-9"	2'-0"	1'-6"	1'-0"	1'-6"
10"	2'-0"	2'-0"	1'-9"	1'-3"	2'-0"
12"	2'-6"	3'-0"	2'-3"	1'-6"	2'-3"
16"	3'-3"	4'-0"	2'-9"	2'-0"	2'-9"

DIMENSION "A" SHALL BE A MINIMUM OF 1'-0" BUT IS TO BE INCREASED WHERE NECESSARY TO PROVIDE BEARING AGAINST UNDISTURBED TRENCH WALL.



**THRUST BLOCK DIMENSIONING
DETAIL**

SCALE : NONE

REV. DATE : 3/05

DWG. W-8

GOFORTH S.U.D.
HAYS, CALDWELL & TRAVIS COUNTIES,
TEXAS

PUSH-ON-JOINT P.V.C. PIPE		MECHANICAL JOINT DUCTILE IRON PIPE			PUSH-ON-JOINT DUCTILE IRON PIPE		
SIZE OF PIPE	RADIUS OF CURVE, FEET	BEND IN ONE JOINT, DEGREES	DEFLECT. 18' JOINT, INCHES	RADIUS OF CURVE, FEET	BEND IN ONE JOINT, DEGREES	DEFLECT. 18' JOINT, INCHES	RADIUS OF CURVE, FEET
3	100	8°-18'	31	125	5°	19	205
4	140	8°-18'	31	125	5°	19	205
6	210	7°-7'	27	145	5°	19	205
8	280	5°-21'	20	195	5°	19	205
10	350	5°-21'	20	195	5°	19	205
12	420	5°-21'	20	195	5°	19	205

MAXIMUM ALLOWABLE PIPE
DEFLECTIONS

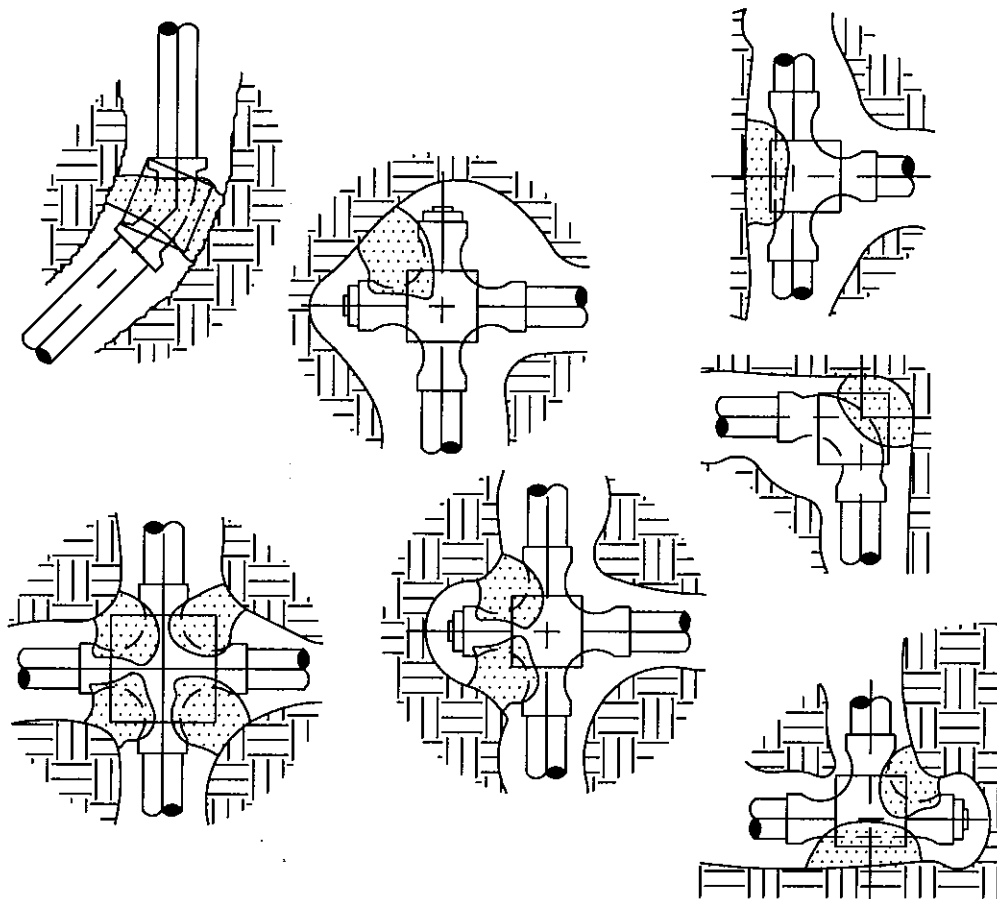
SCALE : NONE

REV. DATE : 3/05

DWG. W-9

GOFORTH S.U.D.

HAYS, CALDWELL & TRAVIS COUNTIES,
TEXAS



NOTES

1. THE EARTH BEARING SURFACE SHALL BE THE UNDISTURBED TRENCH WALL.
2. ALL PIPE JOINTS SHALL BE KEPT FREE FROM CONCRETE.
3. ALL THRUST BLOCKS SHALL CONTAIN A MINIMUM OF 1 1/2 CUBIC YARDS OF CONCRETE.
4. CONCRETE SHALL BE 2000 p.s.i. AT 28 DAYS MINIMUM.
5. ALL FITTINGS AND FITTING JOINTS MUST BE WRAPPED w/ THREE LAYERS OF 8-MIL POLYETHYLENE IN ACCORDANCE WITH AWWA C105.
6. 12"x 12"x 4" THICK CONCRETE BLOCKS SHALL BE INSTALLED DIRECTLY UNDER ALL VALVES, FITTINGS, ETC.

THRUST BLOCK ANCHORING DETAIL

SCALE : NONE

REV. DATE : 3/05

DWG. W-10

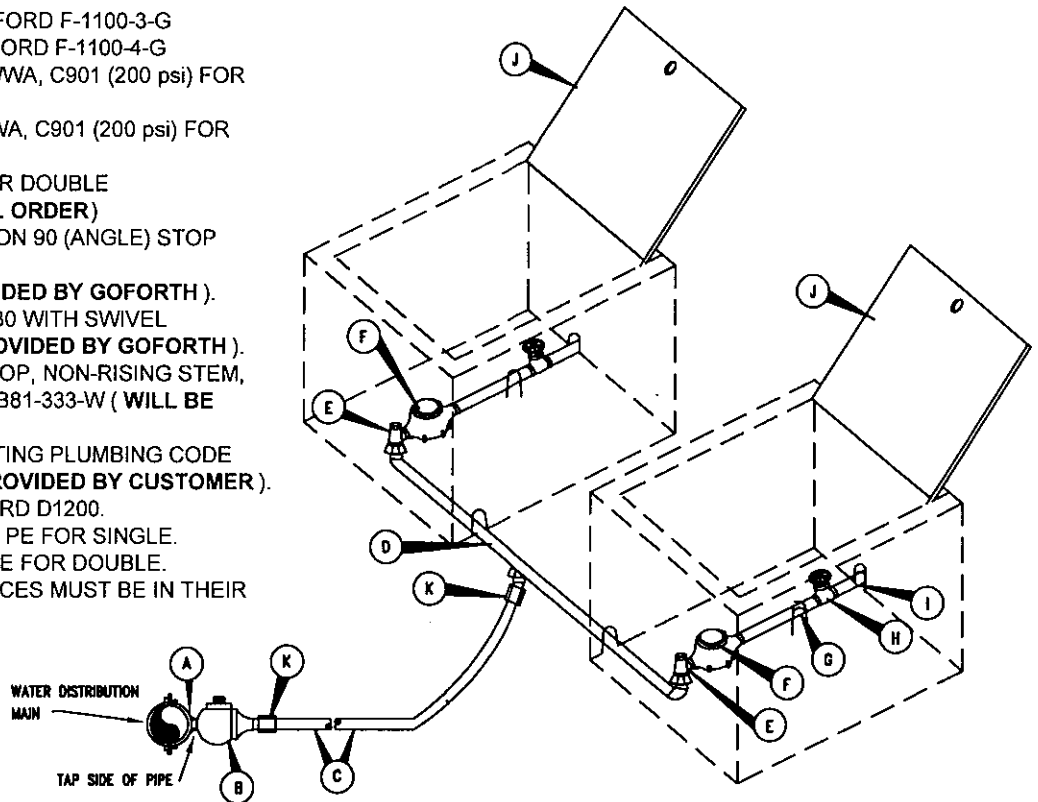
GOFORTH S.U.D.

HAYS, CALDWELL & TRAVIS COUNTIES,
TEXAS

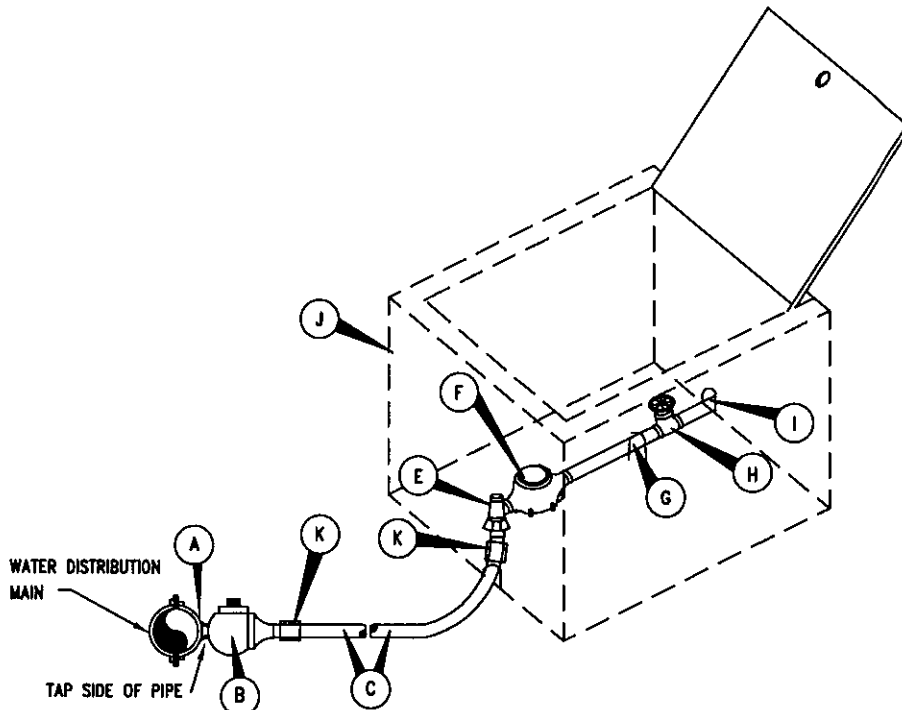
S:\Projects_1\0092-Goforth WSC\DETAILS\DETAILS-0507.dwg

MATERIAL LIST

- A. 3/4" BRASS SADDLE FOR SINGLE
ON LINES < 6" - FORD S70
ON LINES 6" TO 12" - FORD S-90
ON LINES > 12" - FORD 202B
- 1" BRASS SADDLE FOR DOUBLE
ON LINES UP TO 12" - FORD S-90
ON LINES > 12" - FORD 202B
- B. 3/4" CORP. STOP FOR SINGLE - FORD F-1100-3-G
1" CORP. STOP FOR DOUBLE - FORD F-1100-4-G
- C. 3/4" POLYETHYLENE TUBING AWWA, C901 (200 psi) FOR SINGLE
1" POLYETHYLENE TUBING AWWA, C901 (200 psi) FOR DOUBLE
- D. 1"x36" BULLHORN U BRANCH FOR DOUBLE
FORD U-48-43-36-G (SPECIAL ORDER)
- E. 5/8"x3/4"x3/4" FORD COMPRESSION 90 (ANGLE) STOP
KV43-332W-G FOR SINGLE
- F. 5/8"x3/4" METER (WILL BE PROVIDED BY GOFORTH).
- G. DUAL CHECK VALVE JONES J5930 WITH SWIVEL
COUPLING NUT (WILL BE PROVIDED BY GOFORTH).
- H. 3/4" FORD BALL VALVE CURB STOP, NON-RISING STEM,
MALE I.P.T. BY FEMALE I.P.T. B81-333-W (WILL BE
PROVIDED BY GOFORTH).
- I. CUSTOMER SERVICE LINE MEETING PLUMBING CODE
REQUIREMENTS (WILL BE PROVIDED BY CUSTOMER).
- J. PLASTIC METER BOX W/LID - FORD D1200.
- K. 3/4" FORD SS INSERT - 51 F/CTS PE FOR SINGLE.
1" FORD SS INSERT - 52 F/CTS PE FOR DOUBLE.
- L. ALL TESTABLE BACKFLOW DEVICES MUST BE IN THEIR
OWN BOX.



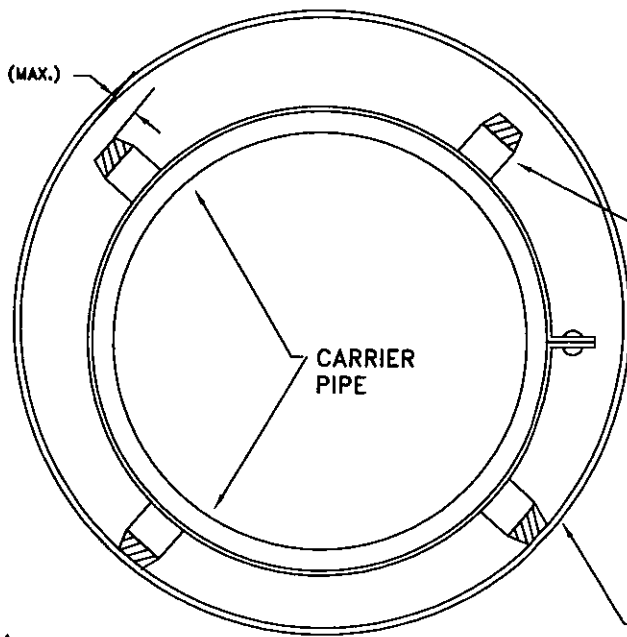
DOUBLE SERVICE



SINGLE SERVICE

METER SERVICE DETAIL	
SCALE : NONE	REV. DATE : 3/07
DWG. W-11	
GOFORTH S.U.D. HAYS, CALDWELL & TRAVIS COUNTIES, TEXAS	
S:\Projects_1\0092-Goforth WSC\DETAILS\DETAILS-0507.dwg	

1" CLEARANCE (MAX.)

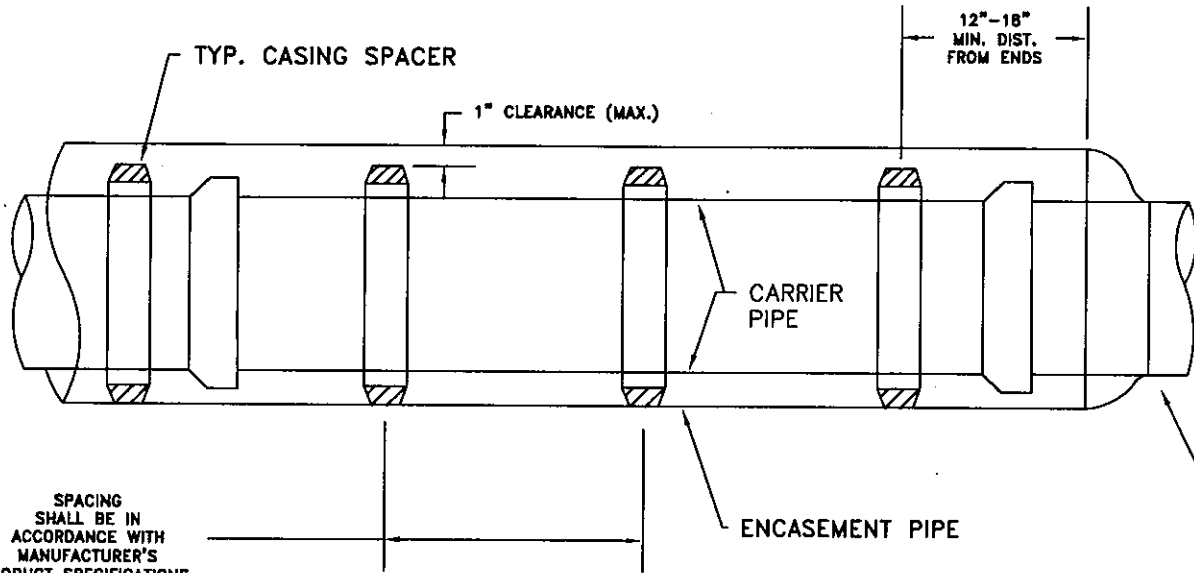


TYP. CASING SPACER

CARRIER PIPE

ENCASEMENT PIPE

NUMBER OF RUNNERS AND CONFIGURATION SHALL COMPLY WITH MANUFACTURER'S APPROVED SHOP SUBMITTAL



TYP. CASING SPACER

1" CLEARANCE (MAX.)

12"-18" MIN. DIST. FROM ENDS

CARRIER PIPE

ENCASEMENT PIPE

SPACING SHALL BE IN ACCORDANCE WITH MANUFACTURER'S PRODUCT SPECIFICATIONS.

ENCASEMENT PIPE ENDS SHALL BE SEALED WITH BOOT OR SEAL WRAP ON EACH END.

CASING SPACER DETAIL ON LINES 6" AND LARGER

CASING SPACER DETAIL

SCALE : NONE

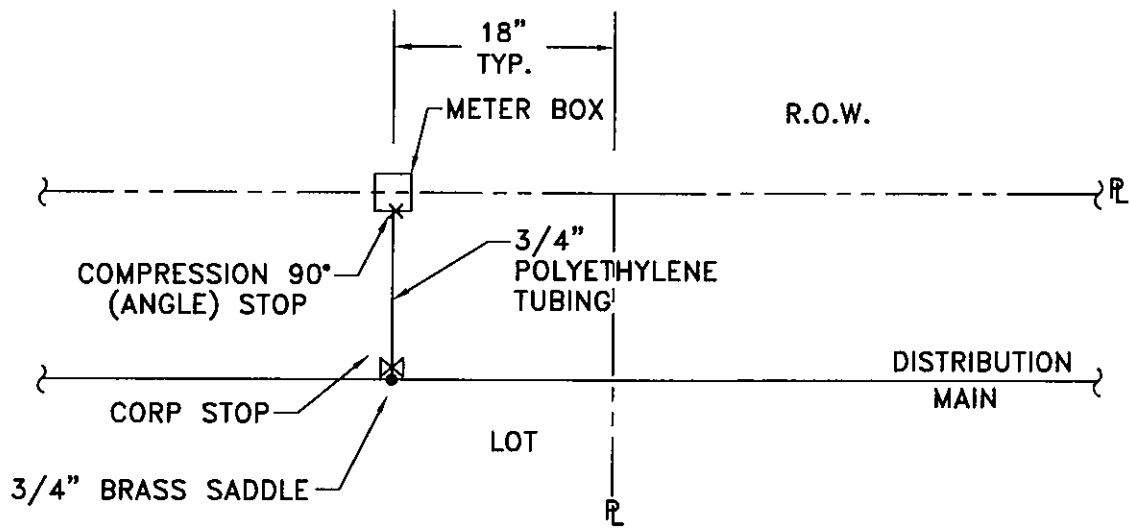
REV. DATE : 3/07

DWG. W-12

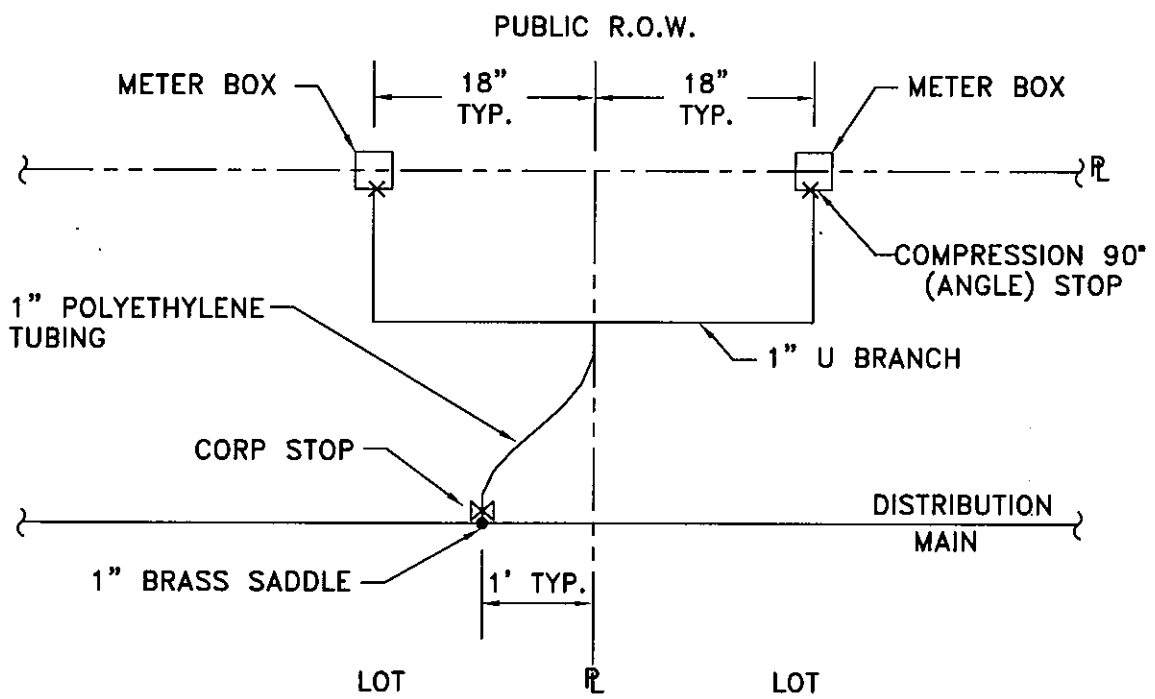
GOFORTH S.U.D.

HAYS, CALDWELL & TRAVIS COUNTIES,

TEXAS

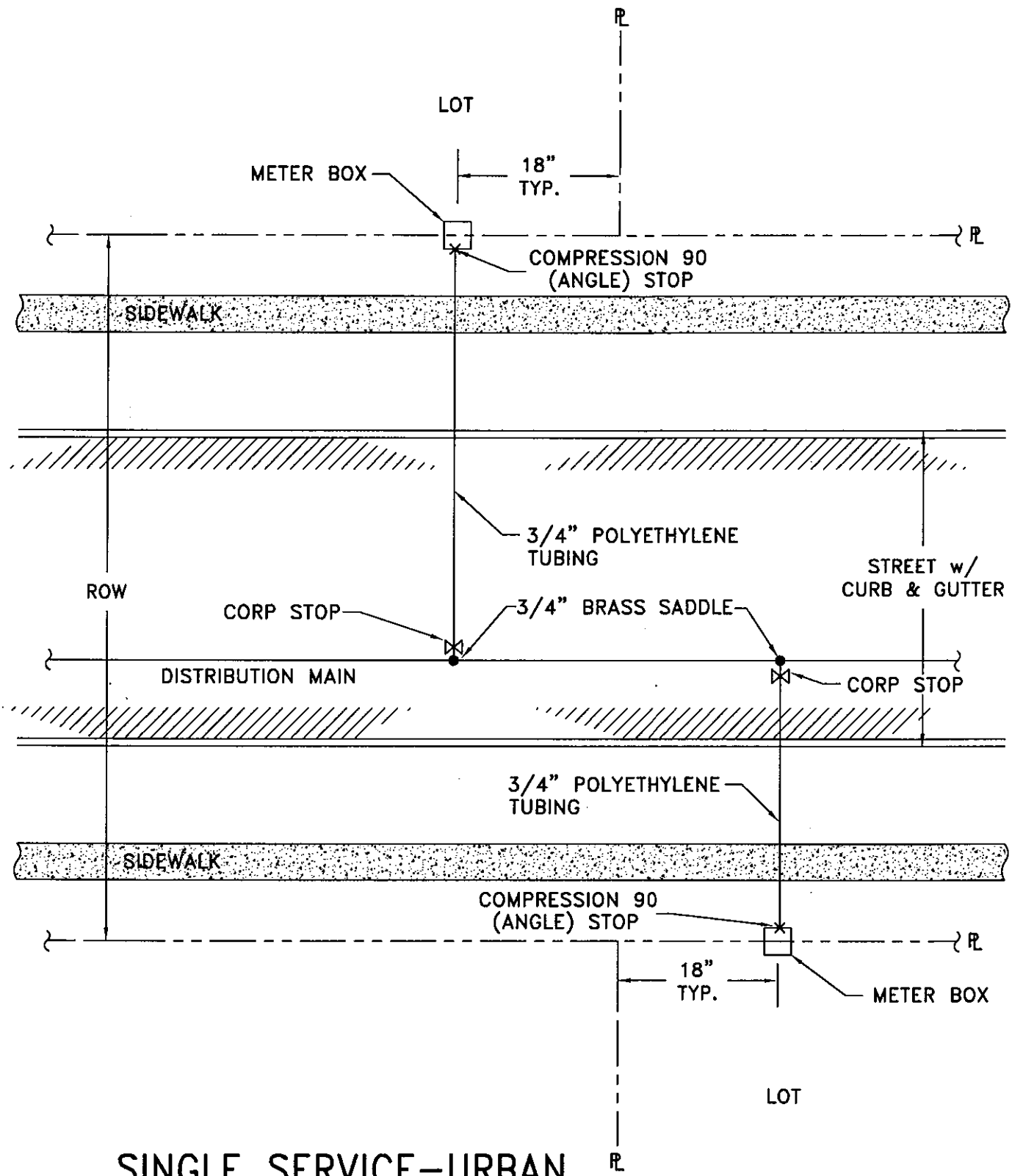


SAME SIDE
SINGLE SERVICE-RURAL



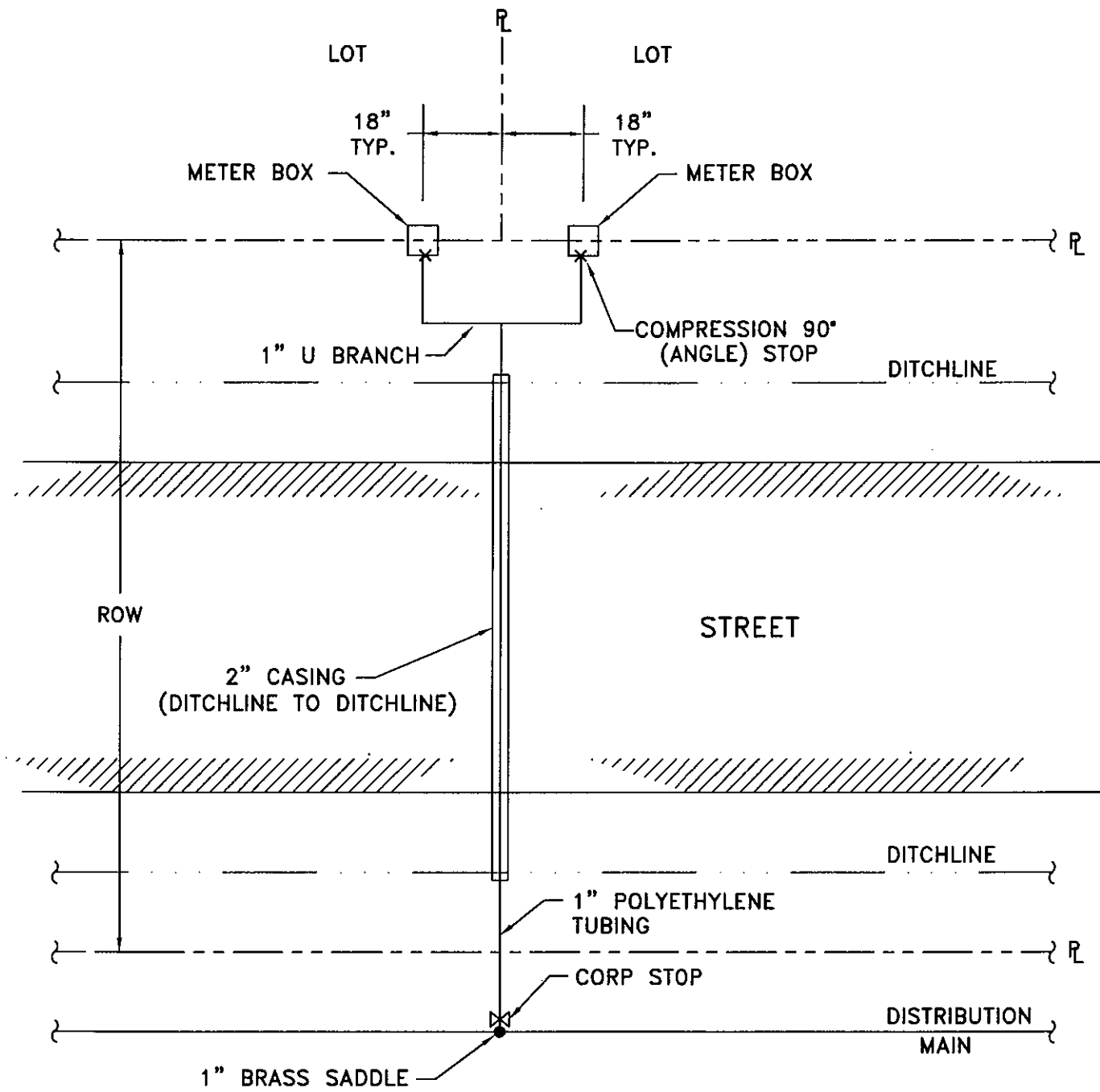
SAME SIDE
DUAL SERVICE-RURAL

METER SERVICE DETAIL	
SCALE : NONE	REV. DATE : 3/05
DWG. W-13	
GOFORTH S.U.D.	
HAYS, CALDWELL & TRAVIS COUNTIES, TEXAS	
S:\Projects_1\0092-Goforth WSC\DETAILS\DETAILS-0507.dwg	



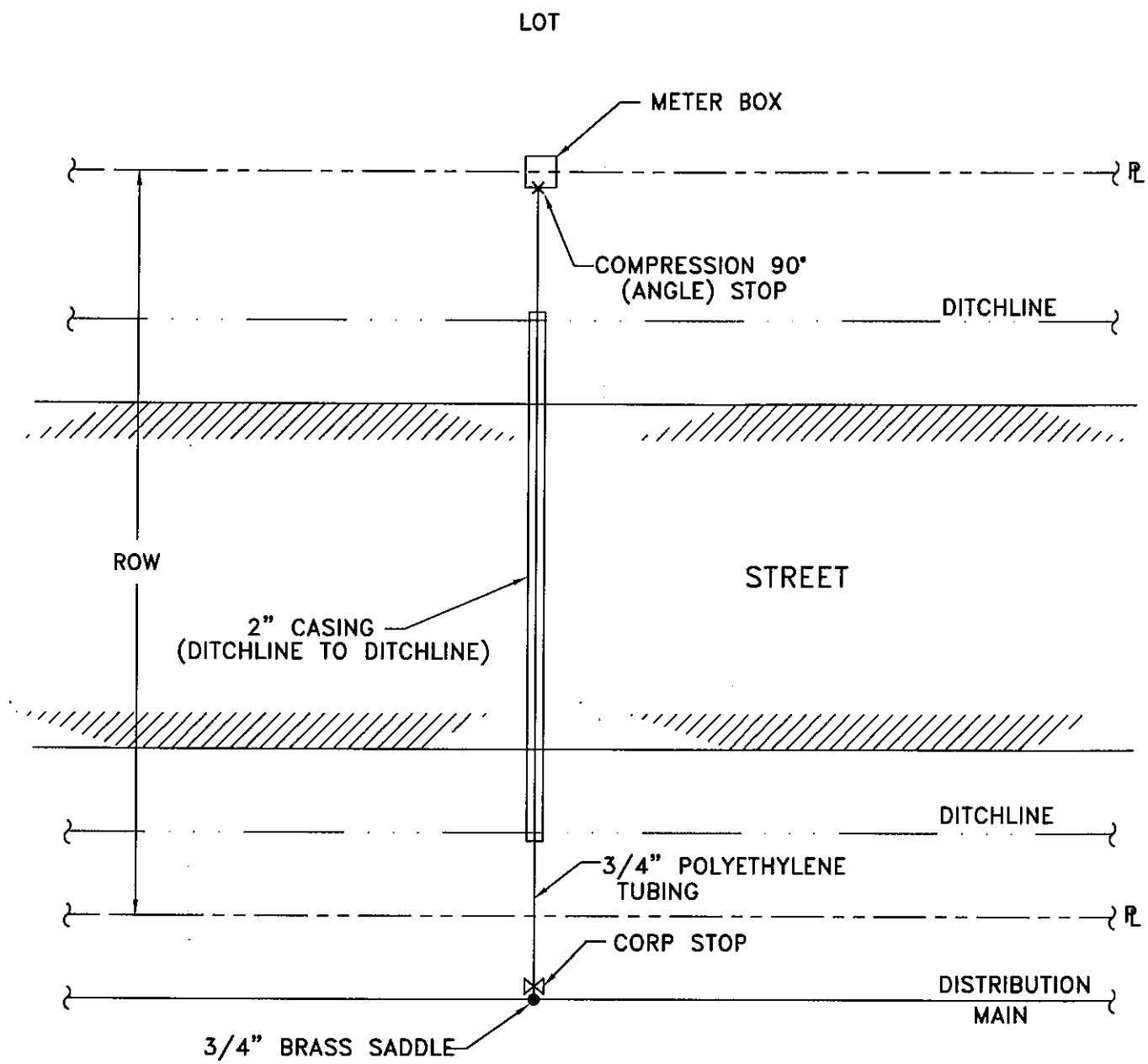
SINGLE SERVICE-URBAN

METER SERVICE DETAIL	
SCALE : NONE	REV. DATE : 5/07
DWG. W-14	
GOFORTH S.U.D. HAYS, CALDWELL & TRAVIS COUNTIES, TEXAS	
S:\Projects_1\0092-Goforth WSC\DETAILS\DETAILS-0507.dwg	



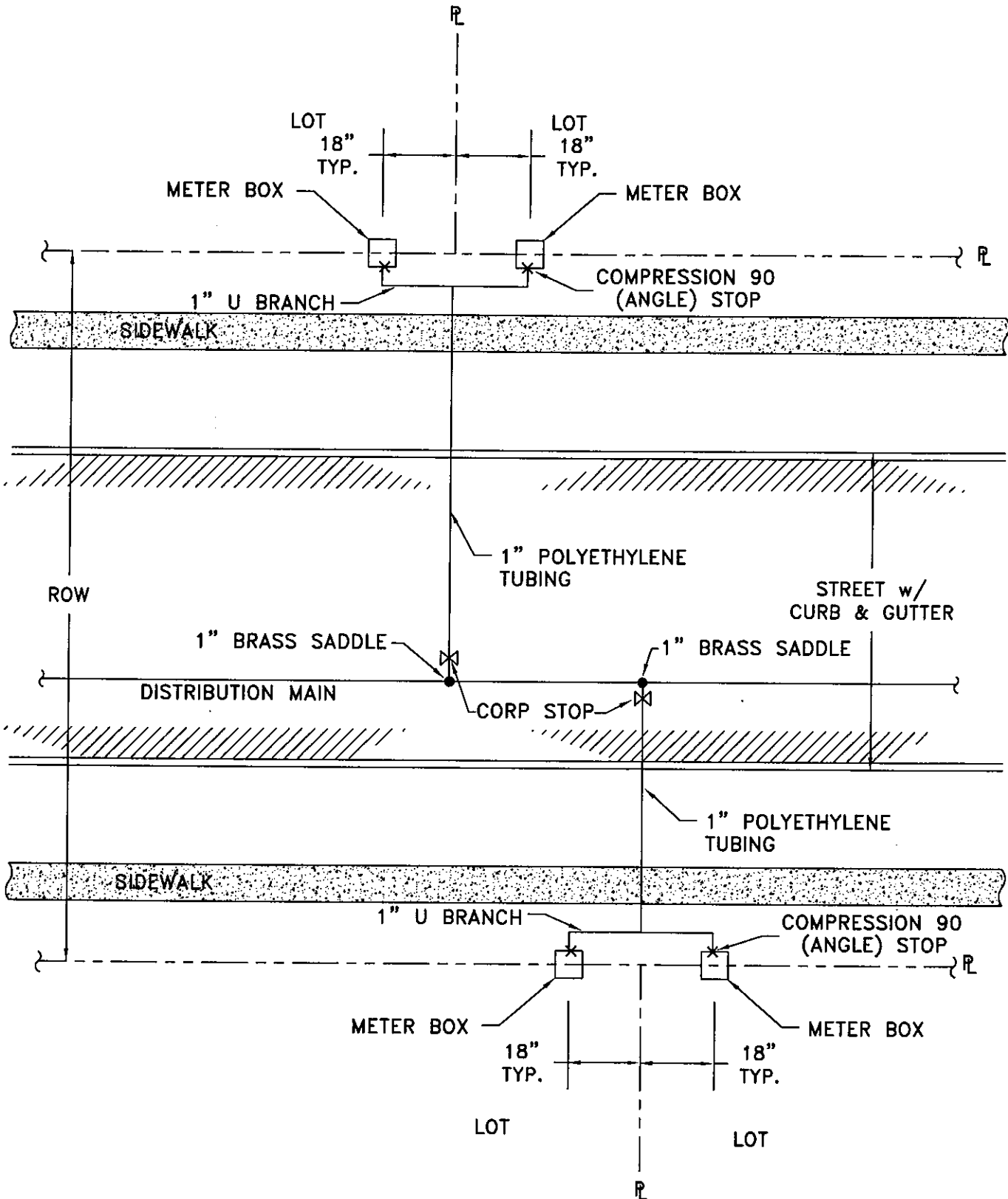
**OPPOSITE SIDE
DUAL SERVICE-RURAL**

METER SERVICE DETAIL	
SCALE : NONE	REV. DATE : 6/05
DWG. W-15	
GOFORTH S.U.D. HAYS, CALDWELL & TRAVIS COUNTIES, TEXAS	
<small>S:\Projects_1\0092-Goforth WSC\DETAILS\DETAILS-0507.dwg</small>	



OPPOSITE SIDE
SINGLE SERVICE-RURAL

METER SERVICE DETAIL	
SCALE : NONE	REV. DATE : 6/05
DWG. W-16	
GOFORTH S.U.D. HAYS, CALDWELL & TRAVIS COUNTIES, TEXAS	
S:\Projects_1\0092-Goforth WSC\DETAILS\DETAILS-0507.dwg	

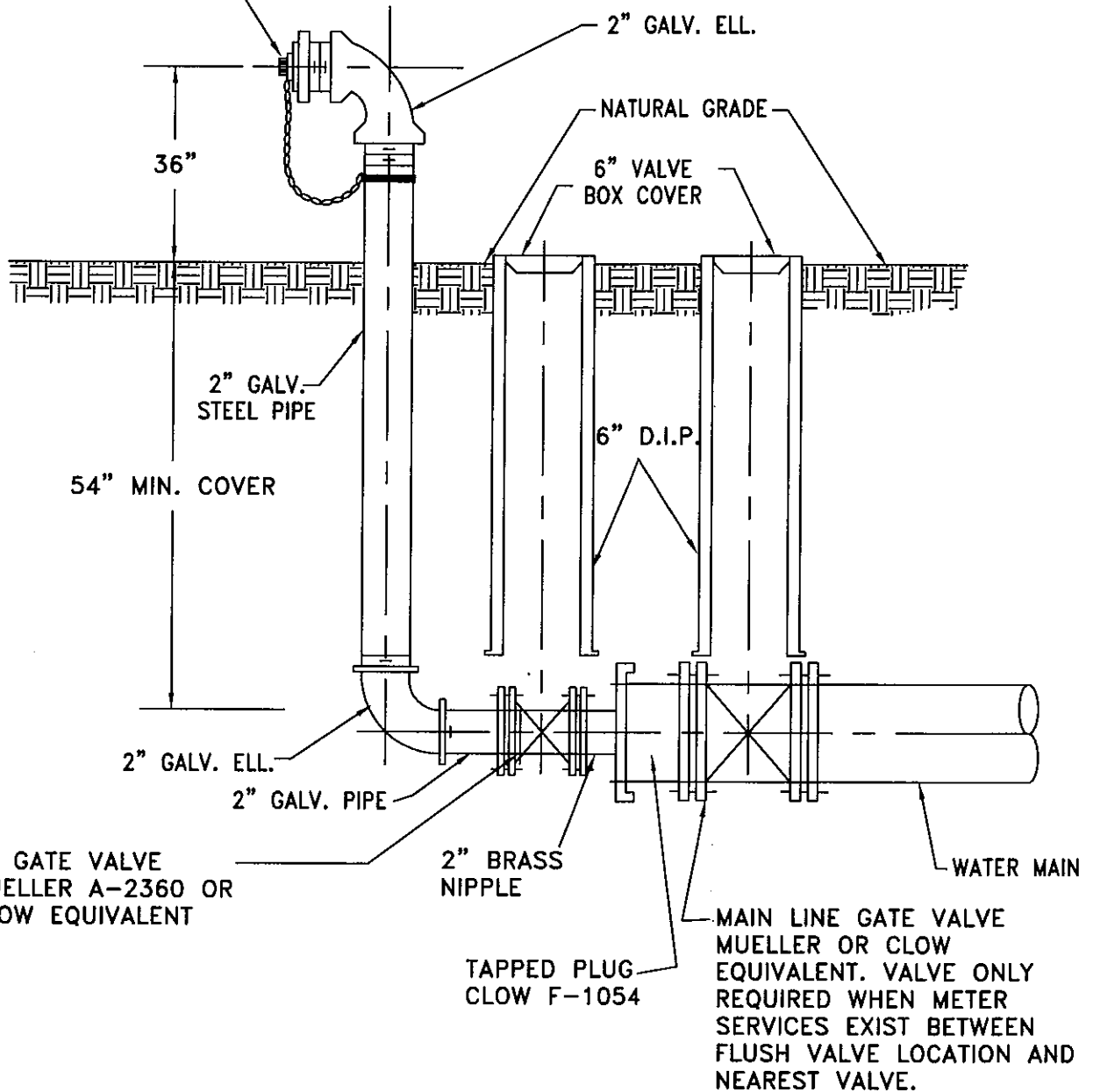


DUAL SERVICE-URBAN

METER SERVICE DETAIL	
SCALE : NONE	REV. DATE : 5/07
DWG. W-17	
GOFORTH S.U.D.	
HAYS, CALDWELL & TRAVIS COUNTIES, TEXAS	

S:\Projects_1\0092-Goforth WSC\DETAILS\DETAILS-0507.dwg

2 1/2" BRASS NSFT DISCHARGE
W/ CAP & CHAIN



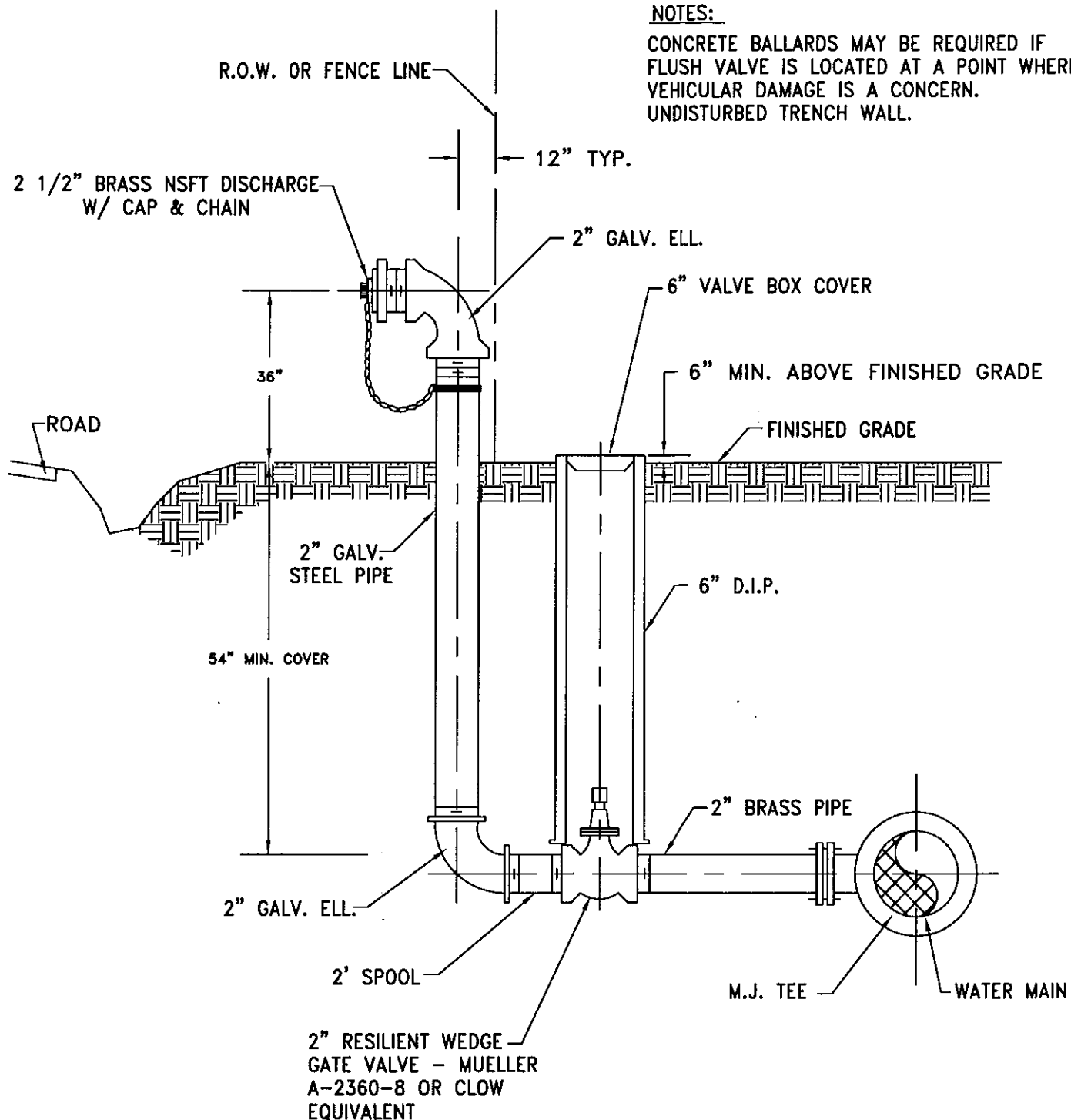
NOTES:

1. ALL BURIED METAL PIPE & FITTINGS SHALL HAVE THREE LAYERS OF 8-MIL POLYETHYLENE WRAP, AWWA C105
2. FLUSH VALVE RISER SHALL BE INSTALLED 1'-0" TYPICALLY FROM RIGHT-OF-WAY LINE WITH DISCHARGE NOZZLE FACING ROADWAY.

FLUSH VALVE DETAIL ON 6" & LARGER MAIN (RURAL)	
SCALE : NONE	REV. DATE : 5/07
DWG. W-18	
GOFORTH S.U.D. HAYS, CALDWELL & TRAVIS COUNTIES, TEXAS	
S:\Projects_1\0092-Goforth WSC\DETAILS\DETAILS-0507.dwg	

NOTES:

CONCRETE BALLARDS MAY BE REQUIRED IF FLUSH VALVE IS LOCATED AT A POINT WHERE VEHICULAR DAMAGE IS A CONCERN. UNDISTURBED TRENCH WALL.



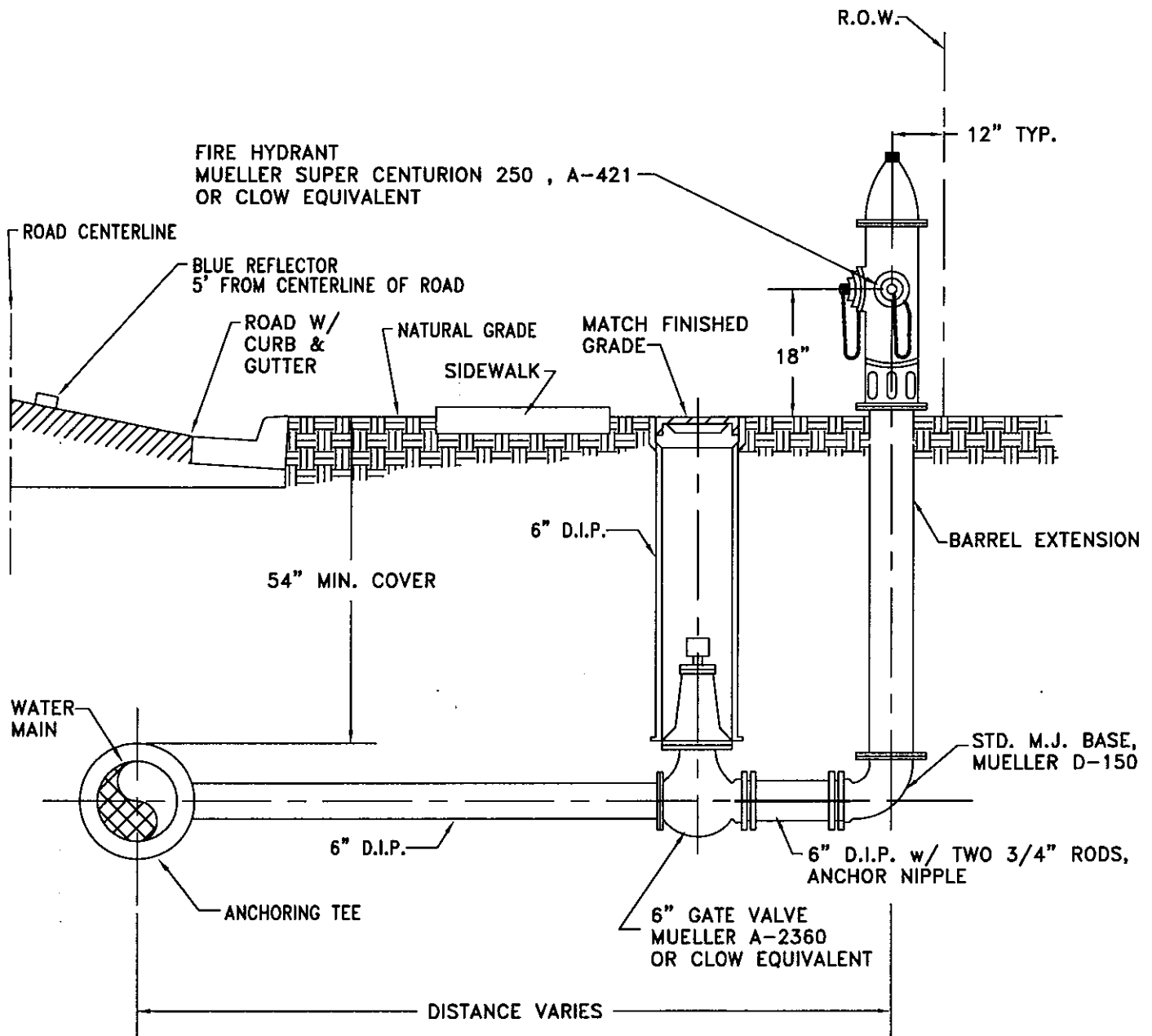
NOTES:

ALL BURIED METAL PIPE & FITTINGS SHALL HAVE THREE LAYERS OF 8-MIL POLYETHYLENE WRAP, AWWA C105

FLUSH VALVE DETAIL ON 4" & SMALLER MAIN (RURAL)

SCALE : NONE REV. DATE : 5/07
 DWG. W-19

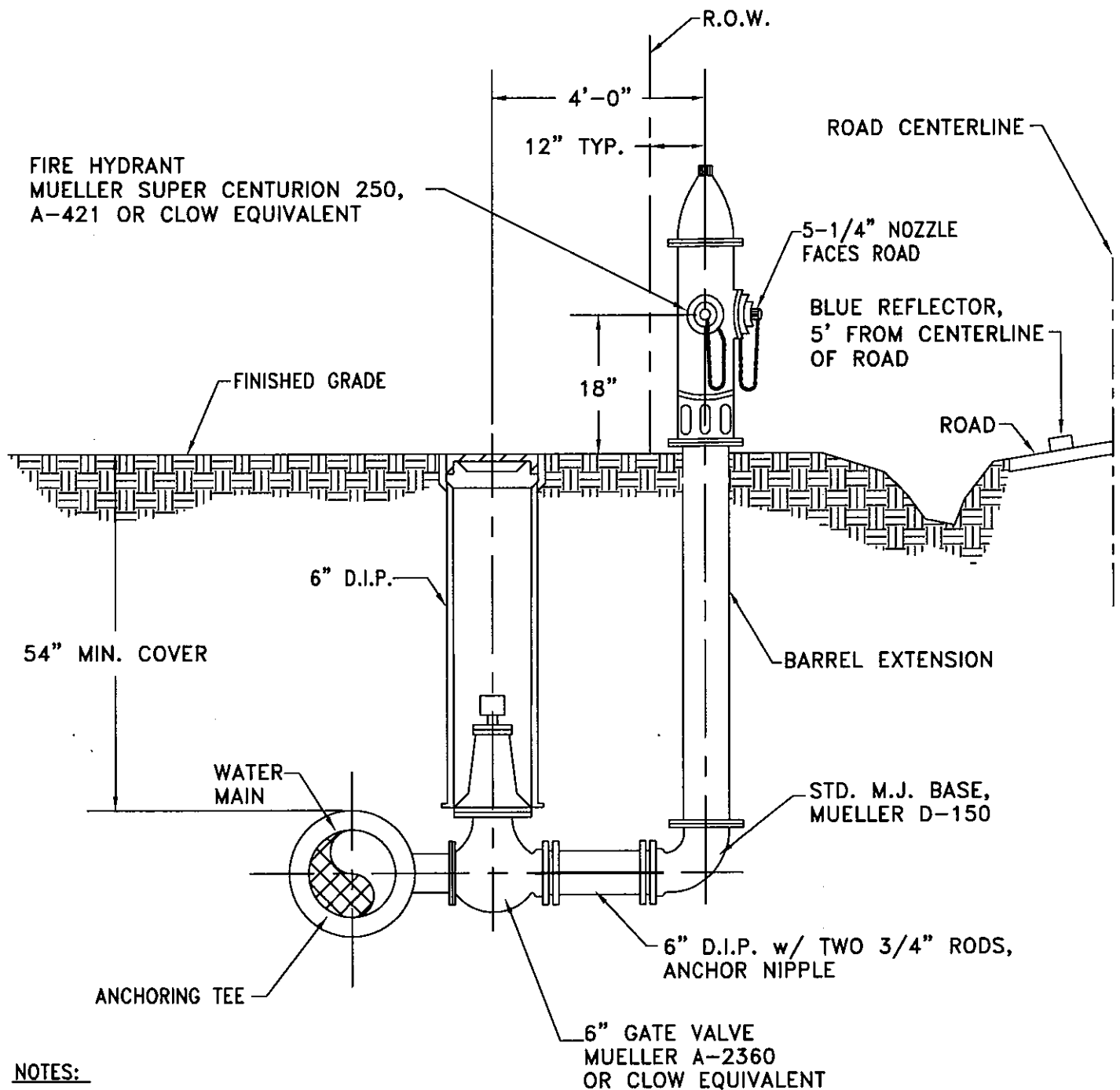
GOFORTH S.U.D.
 HAYS, CALDWELL & TRAVIS COUNTIES,
 TEXAS



NOTES:

ALL BURIED METAL PIPE & FITTINGS
SHALL HAVE THREE LAYERS OF 8-MIL
POLYETHYLENE WRAP, AWWA C105

FIRE HYDRANT DETAIL (URBAN)	
SCALE : NONE	REV. DATE : 5/07
DWG. W-20	
GOFORTH S.U.D. HAYS, CALDWELL & TRAVIS COUNTIES, TEXAS	
S:\Projects_1\0092-Goforth WSC\DETAILS\DETAILS-0507.dwg	



NOTES:

1. ALL BURIED METAL PIPE & FITTINGS SHALL HAVE THREE LAYERS OF 8-MIL POLYETHYLENE WRAP, AWWA C105.
2. CONTRACTOR SHALL VERIFY PERMITS IN TXDOT ROW FOR LOCATION OF HYDRANTS.

**FIRE HYDRANT DETAIL
(RURAL)**

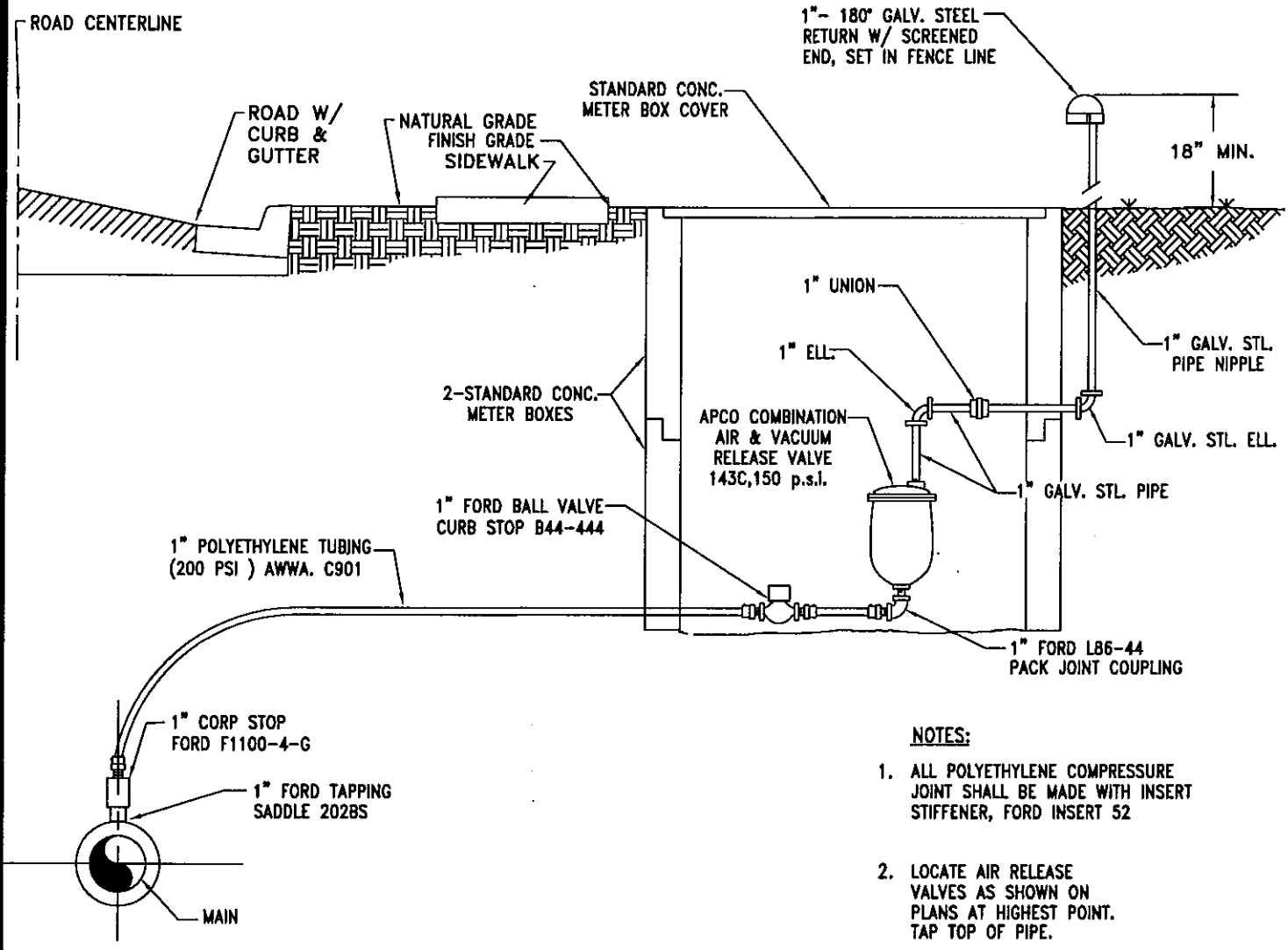
SCALE : NONE

REV. DATE : 4/07

DWG. W-21

GOFORTH S.U.D.

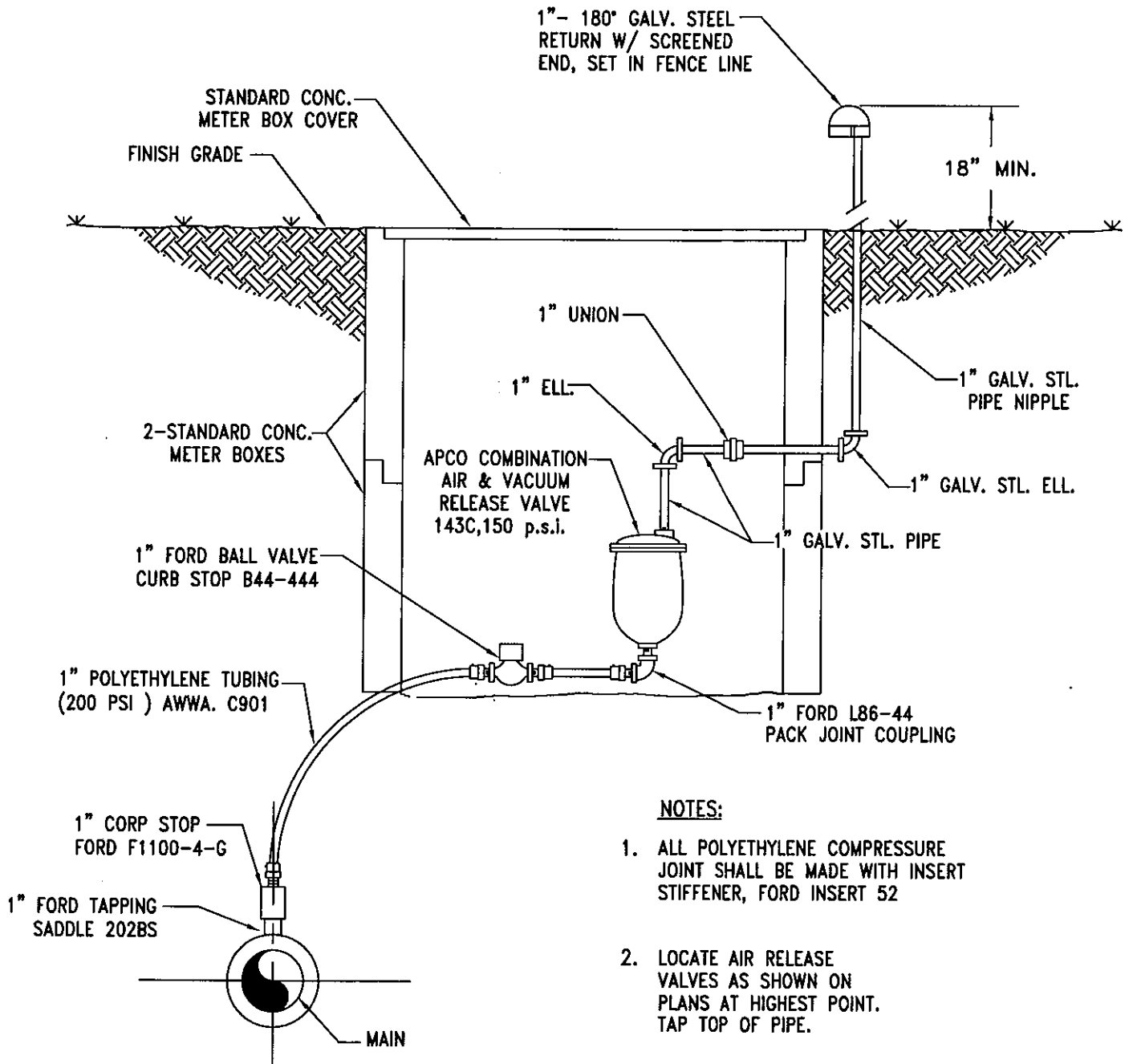
HAYS, CALDWELL & TRAVIS COUNTIES,
TEXAS



NOTES:

1. ALL POLYETHYLENE COMPRESSURE JOINT SHALL BE MADE WITH INSERT STIFFENER, FORD INSERT 52
2. LOCATE AIR RELEASE VALVES AS SHOWN ON PLANS AT HIGHEST POINT. TAP TOP OF PIPE.

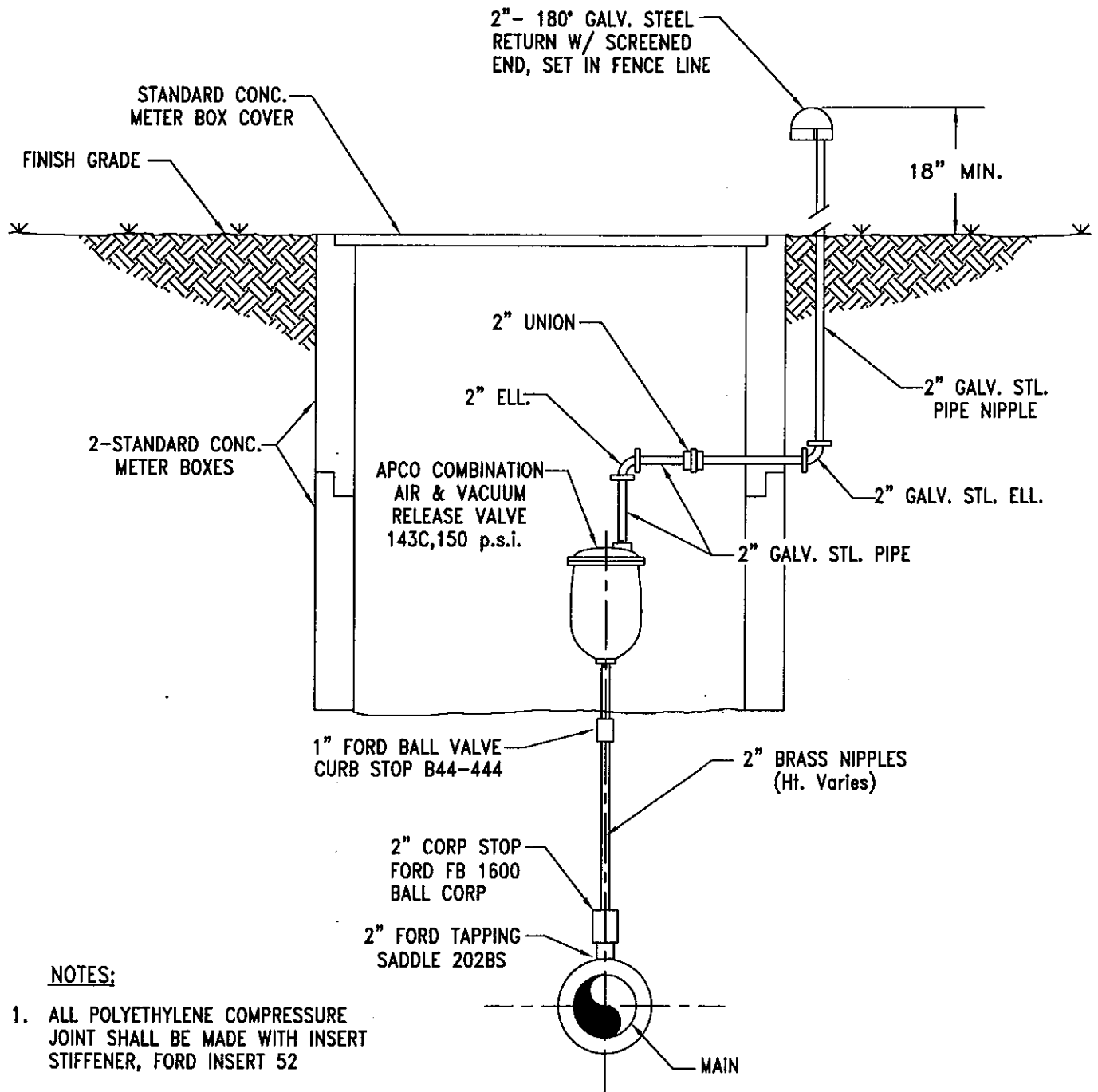
1" AIR RELEASE VALVE DETAIL-URBAN	
SCALE : NONE	REV. DATE : 5/07
DWG. W-22	
GOFORTH S.U.D. HAYS, CALDWELL & TRAVIS COUNTIES, TEXAS	
S:\Projects_1\0092-Goforth WSC\DETAILS\DETAILS-0507.dwg	



NOTES:

1. ALL POLYETHYLENE COMPRESSURE JOINT SHALL BE MADE WITH INSERT STIFFENER, FORD INSERT 52
2. LOCATE AIR RELEASE VALVES AS SHOWN ON PLANS AT HIGHEST POINT. TAP TOP OF PIPE.

1" AIR RELEASE VALVE DETAIL-RURAL	
SCALE : NONE	REV. DATE : 5/07
DWG. W-23	
GOFORTH S.U.D. HAYS, CALDWELL & TRAVIS COUNTIES, TEXAS	
S:\Projects_1\0092-Goforth WSC\DETAILS\DETAILS-0507.dwg	



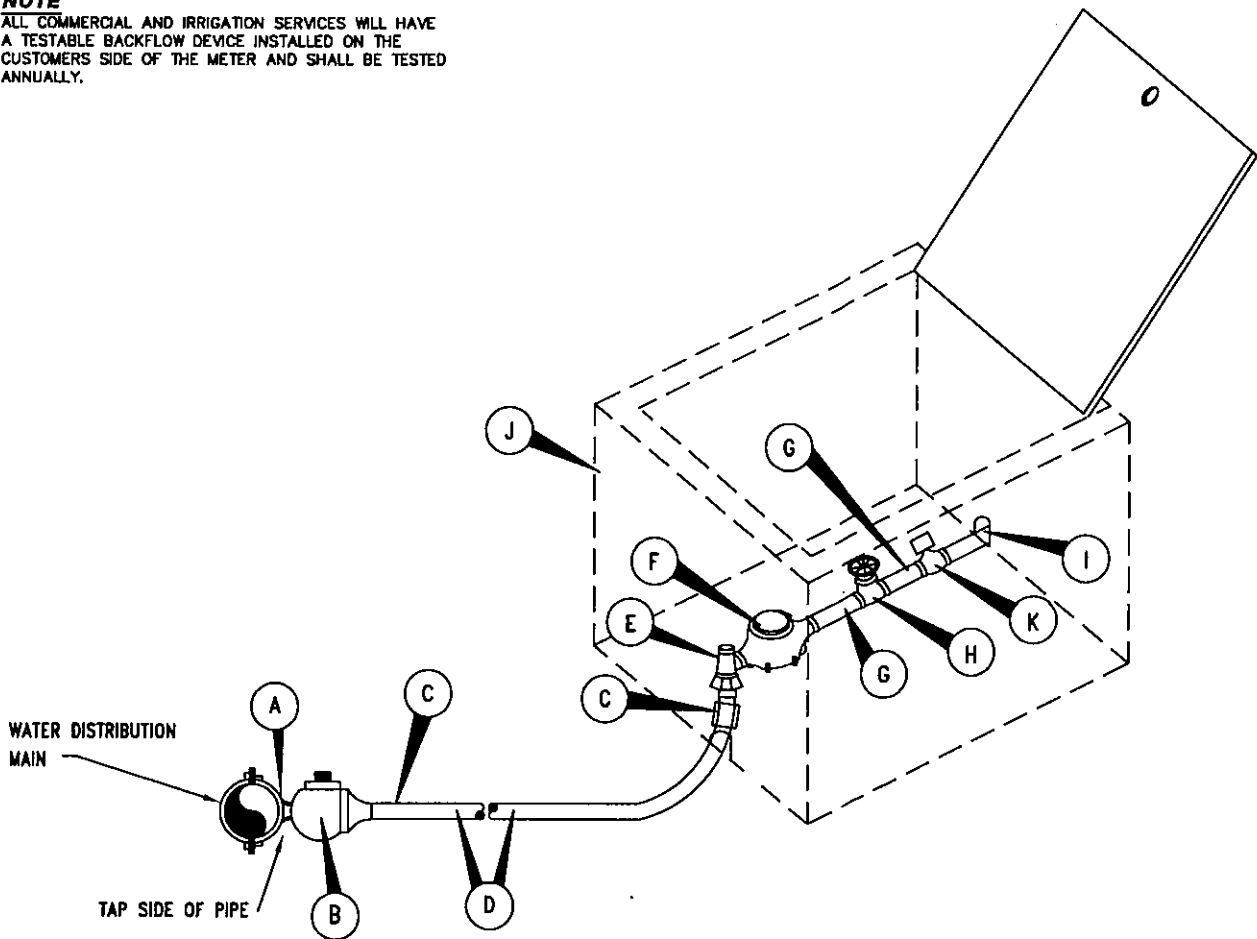
NOTES:

1. ALL POLYETHYLENE COMPRESSURE JOINT SHALL BE MADE WITH INSERT STIFFENER, FORD INSERT 52
2. LOCATE AIR RELEASE VALVES AS SHOWN ON PLANS AT HIGHEST POINT. TAP TOP OF PIPE.

2" AIR RELEASE VALVE DETAIL-RURAL	
SCALE : NONE	REV. DATE : 3/05
DWG. W-24	
GOFORTH S.U.D. HAYS, CALDWELL & TRAVIS COUNTIES, TEXAS	

NOTE

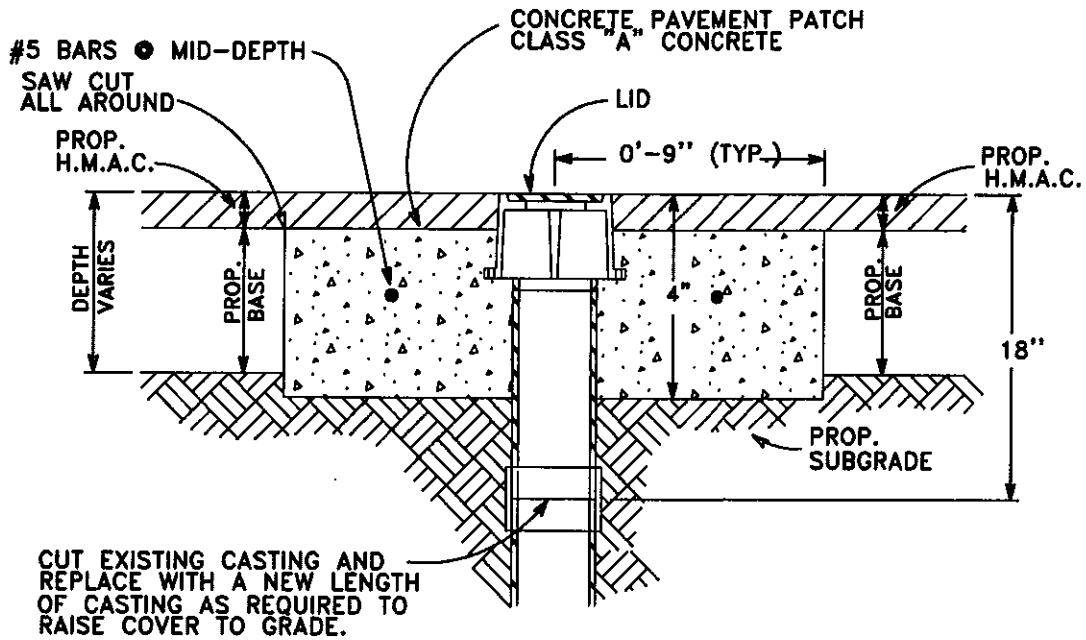
ALL COMMERCIAL AND IRRIGATION SERVICES WILL HAVE A TESTABLE BACKFLOW DEVICE INSTALLED ON THE CUSTOMERS SIDE OF THE METER AND SHALL BE TESTED ANNUALLY.



MATERIAL LIST

- A. BRASS SADDLE - FORD
- B. CORP. STOP
1" - FORD F-1100-4-G
1-1/2" - FORD FB1000-6-G
2" - FORD FB1000-7-G
- C. STAINLESS STEEL INSERT
1" - FORD 52 F/CTS
1-1/2" - NONE REQUIRED
2" - NONE REQUIRED
- D. SERVICE LINE
1" - POLYETHYLENE TUBING AWWA, C901 (200 psi)
1-1/2" - POLYETHYLENE TUBING AWWA, C901 (200 psi)
2" - POLYETHYLENE TUBING AWWA, C901 (200 psi)
- E. COMPRESSION 90 (ANGLE) STOP
1" - FORD BA43-444W
1-1/2" - FORD FV43-666W
2" - FORD FV63-777W-1DR7 FLANGED
- F. WATER METER
(WILL BE PROVIDED BY GOFORTH)
- G. BRASS NIPPLE
(WILL BE PROVIDED BY GOFORTH)
- H. BALL VALVE CURB, NON-RISING STEM, MALE I.P.T. BY FEMALE I.P.T.
1" - FORD B81-444
1-1/2" - FORD B81-666
2" - FORD B81-777
(WILL BE PROVIDED BY GOFORTH)
- I. CUSTOMER SERVICE LINE MEETING PLUMBING CODE REQUIREMENTS
(WILL BE PROVIDED BY CUSTOMER).
- J. COMMERCIAL PLASTIC METER BOX WITH LID
- K. TESTABLE BACKFLOW DEVICE
(WILL BE PROVIDED BY GOFORTH)

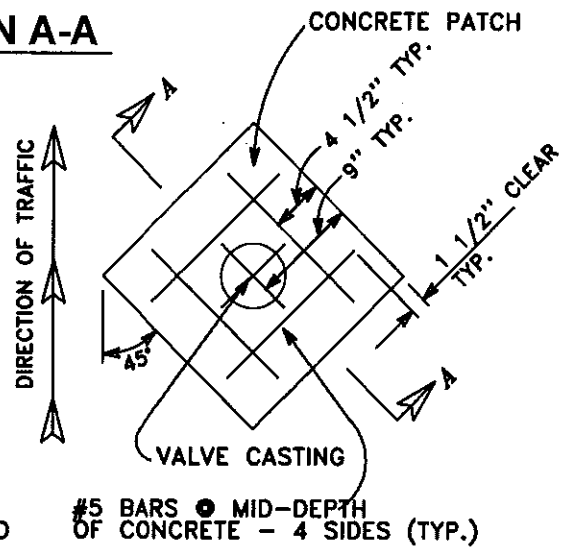
1" - 2" COMMERCIAL METER SERVICE DETAIL	
SCALE : NONE	REV. DATE : 3/07
DWG. W-26	
GOFORTH S.U.D. HAYS, CALDWELL & TRAVIS COUNTIES, TEXAS	
S:\Projects_1\0092-Goforth WSC\DETAILS\DETAILS-0507.dwg	



SECTION A-A

NOTES:

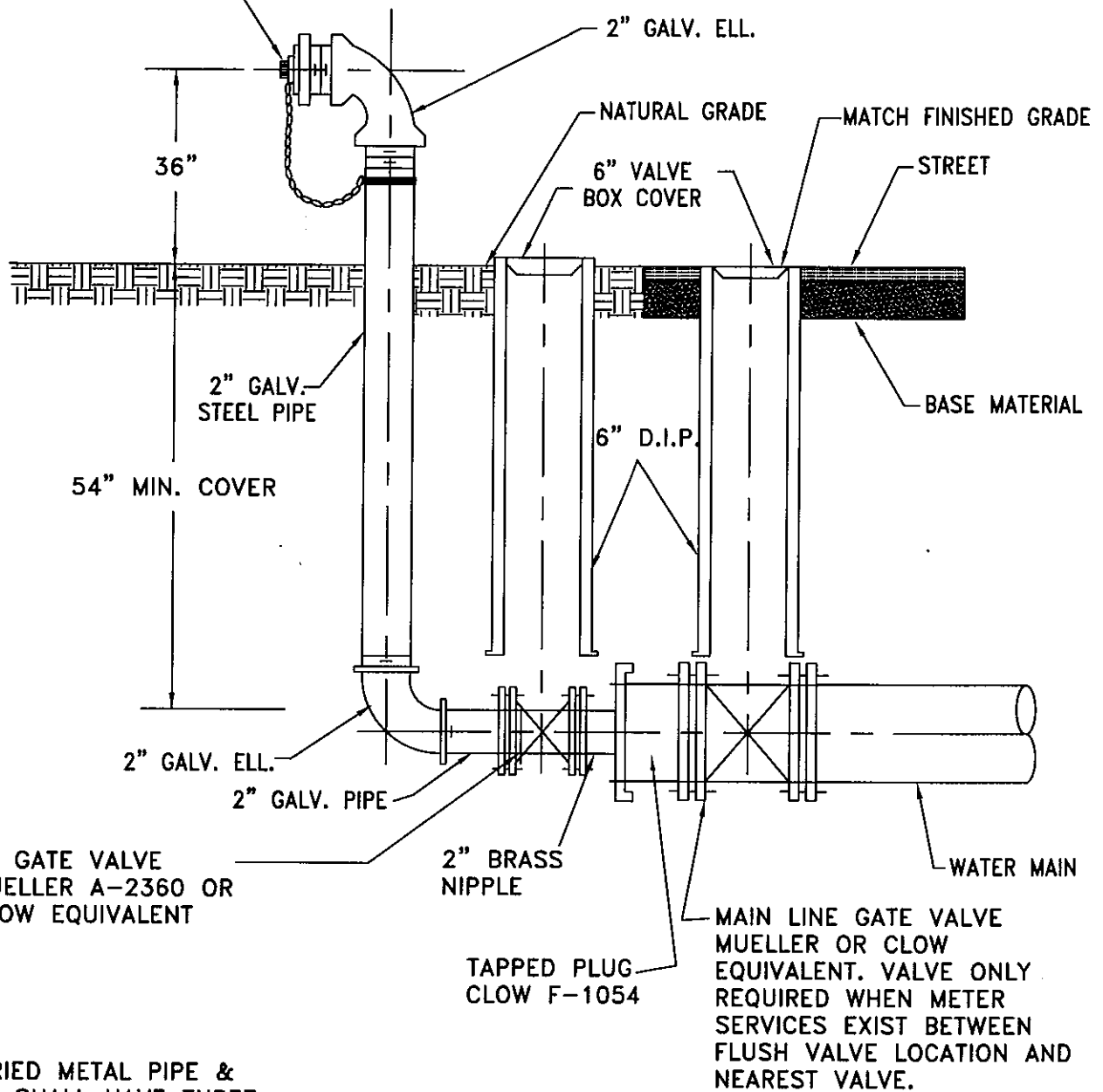
1. VALVE CASTINGS SHALL BE ADJUSTED TO GRADE AFTER FINAL LIFT OF OVERLAY IS IN PLACE.
2. CLEAN CASTINGS OF ALL DEBRIS DOWN TO THE BASE OF THE VALVE.
3. REMOVE EXISTING CASTING DOWN 18" AND REPLACE TO THE NEW ELEVATION USING NEW PIPE AND CASTING.
4. WHERE CAST IRON CASTINGS TO BE REMOVED REQUIRE EXCAVATION GREATER THAN 20 INCHES DEEP, CONTRACTOR MAY ELECT TO FILL EXCAVATION WITH CONTROLLED LOW STRENGTH MATERIAL TO THE UNDERSIDE OF THE CONCRETE PAVEMENT PATCH IN LIEU OF COMPACTED BACKFILL.



PLAN VIEW

WATER VALVE BOX ADJUSTMENT AND CONCRETE PAD DETAIL	
SCALE : NONE	REV. DATE : 8/06
DWG. W-27	
GOFORTH S.U.D. HAYS, CALDWELL & TRAVIS COUNTIES, TEXAS	
S:\Projects_1\0092-Goforth WSC\DETAILS\DETAILS-0507.dwg	

2 1/2" BRASS NSFT DISCHARGE
W/ CAP & CHAIN



NOTES:

1. ALL BURIED METAL PIPE & FITTINGS SHALL HAVE THREE LAYERS OF 8-MIL POLYETHYLENE WRAP, AWWA C105
2. EASEMENT REQUIRED IF FLUSH VALVE IS BEYOND PUBLIC R.O.W.

TEMPORARY FLUSH VALVE DETAIL-URBAN

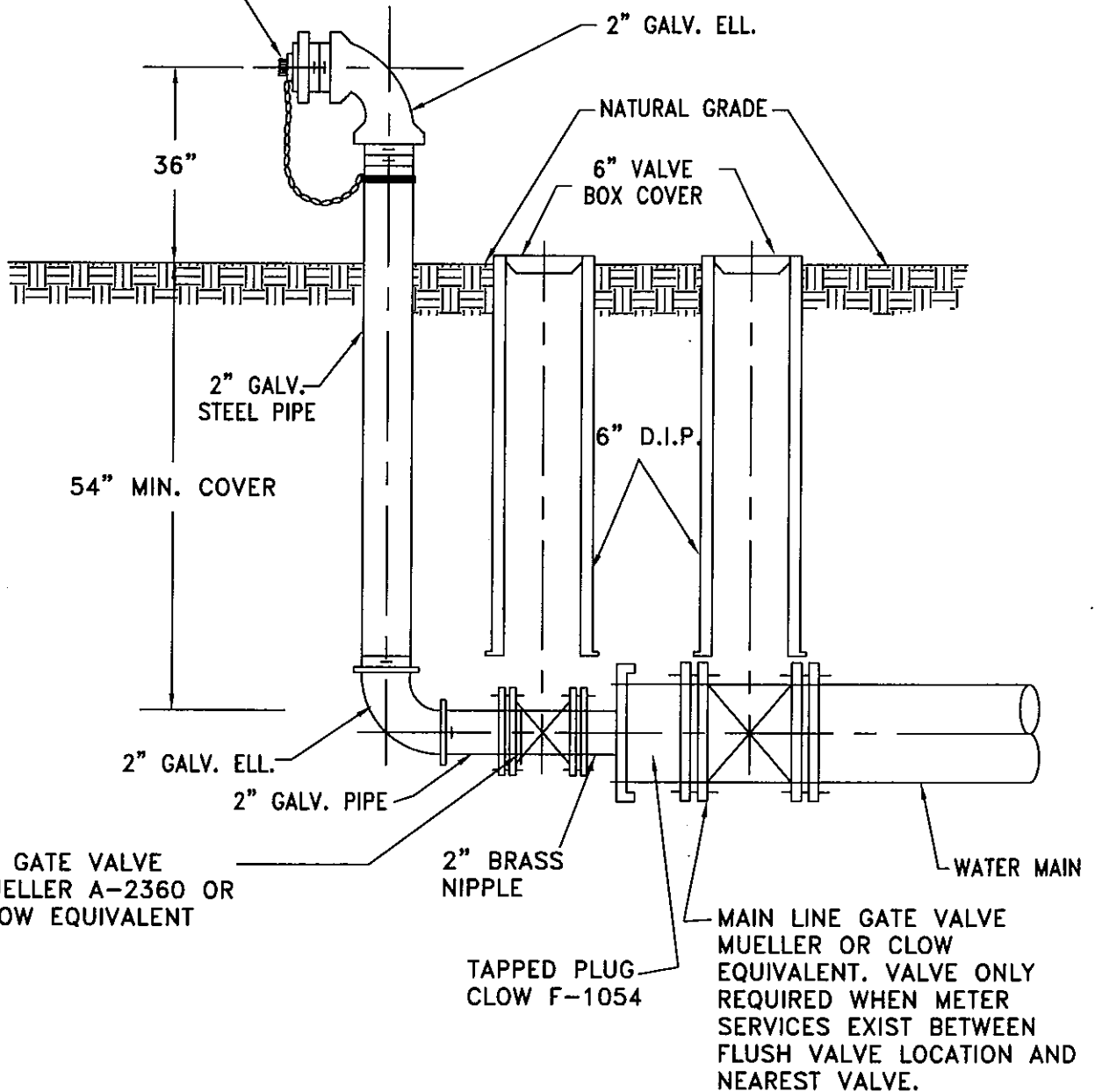
SCALE : NONE

REV. DATE : 5/07

DWG. W-28

GOFORTH S.U.D.
HAYS, CALDWELL & TRAVIS COUNTIES,
TEXAS

2 1/2" BRASS NSFT DISCHARGE
W/ CAP & CHAIN



NOTES:

1. ALL BURIED METAL PIPE & FITTINGS SHALL HAVE THREE LAYERS OF 8-MIL POLYETHYLENE WRAP, AWWA C105
2. FLUSH VALVE RISER SHALL BE INSTALLED 1'-0" TYPICALLY FROM RIGHT-OF-WAY LINE WITH DISCHARGE NOZZLE FACING ROADWAY.

TEMPORARY FLUSH VALVE DETAIL-RURAL	
SCALE : NONE	REV. DATE : 5/07
DWG. W-29	
GOFORTH S.U.D. HAYS, CALDWELL & TRAVIS COUNTIES, TEXAS	